

***Masters preview: How to really watch • DCP results***

# ILLINOIS GOLFER

DIGITAL EDITION

APRIL 8, 2021

## **Behind Augusta's curtain**



**Fifty things you don't know about the Masters Tournament**

# The Buzz

## How to really watch the Masters

Binge watching is in, so they tell us. Find a favorite show, curl up on the couch, and dive in. Day turns to night outside, clear becomes cloudy, and you don't even notice. It was a thing even before the pandemic, and it's more of a thing now.

Not for everybody, though. Not everyone is into watching *Mandalorian* seven hours straight. Or even old episodes of *The Rockford Files*.

But the Masters? That's something we're here for. Thanks to the recently enlightened outlook by the bosses at Augusta National – starting with **Hootie Johnson** – if you're hooked up online, you can watch more of the Masters than almost any other tournament.

Once upon a time – the 1970s – CBS was allowed to show 90 minutes on Saturday and two hours on Sunday, a little more if the NBA game preceding it ran short. There were Thursday and Friday highlights at 10:30, and that was it. Four hours or so, and if you blinked in the days before the VCR, you missed it.

In 1982, USA Cable Network began Thursday-Friday coverage. All four days! What could be better?

Showing of all 18 holes, that's what. That finally happened after a Saturday rain delay, and Johnson was impressed enough to allow CBS to do it every year beginning in 2002.

That was great. Today is better. If you can stream video on your phone or to your TV, there's as much as 142 hours of live coverage available. Start with the

TV broadcasts: Thursday and Friday from 2-6:30 p.m. Central time on ESPN, plus the highlights on CBS at 10:35 p.m. CT. Saturday from 2-6 p.m. CT on CBS. Sunday from 1-6 p.m. on CBS. All broadcasts will run late if necessary.

The quartet of online feeds are extensive: There's Featured Groups, Holes 4-5-6 (new this year), Amen Corner and Holes 15-16, and they run from six to about 10 hours each day. Across four days, that's some 124 additional hours on top of the regular television coverage. And it's free on [www.Masters.com](http://www.Masters.com).

Thursday, for instance, Featured Groups are on from 8:15 a.m. to 6:30 p.m.; Holes 4-5-6 from 8:25 a.m.-5:45 p.m.; Amen Corner from 9:45 a.m.-5 p.m.; and Holes 15-16 from 10:45 a.m.-6 p.m. That's about 34 hours on one day in addition to the TV feed. (And in Canada, TSN, the Great White North's cable version of ESPN, takes the Featured Groups, Amen Corner and Holes 15-16 for four hours before ESPN or CBS come on the air.)

But wait, there's more: Masters on the Range for two hours every morning all week on CBS Sports Network, Golf Channel's *Live From the Masters* all morning and the for-the-record wrapup each night, and ESPN's *SportsCenter* with live cut-ins Thursday and Friday.

You may never get to Augusta National, and you'll probably never be a member, but this week, it sure feels like we belong.

**THE COVER** The risk-reward par-5 13th hole doesn't have much risk for the big hitters unless they flub their second shot into the water. But come up short on the drive, and 7 is possible. / Tim Cronin / Illinois Golfer

## IN THIS ISSUE

THE 85TH MASTERS



MASTERS PREVIEW: 50 THINGS YOU DIDN'T KNOW	4
OPINION	
GRILL ROOM: RETURN OF THE ROARS	3
DEPARTMENTS	
AROUND AUGUSTA	8
THE DIRECTORY	9
TOUR GUIDE	18

## ILLINOIS GOLFER

APRIL 7, 2021 · DIGITAL EDITION  
VOL. 7, NO. 1 · ISSUE 48

PUBLISHED MONTHLY IN SEASON,  
WITH OCCASIONAL SPECIAL ISSUES

PUBLISHER & EDITOR **TIM CRONIN**  
TRAVEL EXPERT **LEN ZIEHM**

JOIN US ONLINE AT [WWW.ILLINOISGOLFER.NET](http://WWW.ILLINOISGOLFER.NET)  
E-MAIL US AT [ILLINOISGOLFER@EARTHLINK.NET](mailto:ILLINOISGOLFER@EARTHLINK.NET)  
CALL US AT (708) 638-1164

FOLLOW US ON TWITTER: @ILLINOISGOLFER

DISPLAY / CLASSIFIED ADVERTISING:  
CALL (708) 638-1164 FOR PARTICULARS.

ILLINOIS GOLFER ASSUMES NO RESPONSIBILITY FOR UNSOLICITED MATERIALS OR CLAIMS OF ADVERTISERS. CAVEAT EMPTOR.

© 2021 ILLINOIS GOLFER LLC, A UNIT OF CRONIN MULTIMEDIA



## The Grill Room by Tim Cronin

# A Masters in a partly-filled room

**T**he lords of Augusta, headed by Fred Ridley, chairman of the lords, aren't saying how many spectators will be at this year's Masters, which commences today.

That's not unusual. They never announce attendance at Augusta National Golf Club, or much else. No worries. Just figure that of the usual 40,000 or so on a tournament day, maybe 5,000 will be on hand. In other words, about as many as attended the first Masters Tournament – then the Augusta National Invitation Tournament at the insistence of the humble Bobby Jones – in 1934.

That's a success, given the COVID-19 world we continue to live in, especially because Augusta, as you may have heard, is in the state of Georgia, where masks are optional.

Last year's toonimint was held in November, the management having delayed it from April until late in the year to give themselves a chance to have a least a few fans on hand. Alas, the pandemic was still raging before the vaccines were perfected, and thus only club members and close family of players were allowed. It was a tradition unlike any before, much less like any other.

It was played, at least. Augusta National, like the USGA and PGA of America, didn't go in the direction of the R&A, which canceled the British Open and took the pandemic insurance money instead, shoving their schedule of venues back a year.

Thus, Dustin Johnson is the defending champion, and will likely be the Masters scoring record holder for decades given his 20-under-par 268 of November last. The reason is agronomy.

Augusta National's golf course is softer in fall than in spring, with overseed spread about to bring the trademark green to the eye then needing plenty of water to take.

In the spring, less water is needed, and if there's no rain, the course plays firm and fast, with off-line balls running through fairways and greens much more difficult to hold.

That's the Augusta National Johnson and his foes will face beginning this morning. The week has been dry, and there's some rain forecast for Friday night, but the practice rounds have revealed a course more challenging than we've seen lately. Ridley, whose U.S. Amateur title qualifies him as someone who can play, said the course is faster than any year since 2003.

Johnson can belt it but proved long before winning the Masters that he had the touch necessary to stop the ball in the right place and the feel to make a difficult putt. U.S. Opens at Oakmont aren't won by accident. It was that victory that rid him of the demons of botching some previous majors, including U.S. Opens at Pebble Beach and Chambers Bay. Now, with a pair of majors in his pocket and with a mind-set that puts the worst out of mind, there's no telling how many majors he could win presuming good health.

Johnson had been threatening at Augusta, with four other top-10 finishes in the previous five years. So a repeat, while unusual in the Masters, isn't out of the question.

Much of the smart money, however, is on either Justin Thomas – whose Players Championship title last month should be considered a major – or Jon Rahm.

Thomas is headed in the right direction at Augusta. In the last four years, he's gone from 22nd to 17th to 12th to fourth.

We know Rahm can putt – Johnson has likely put the 66-footer Rahm sank on the first playoff hole at Olympia Fields to beat him for the BMW / Western Open title out of mind, but we haven't. We know Rahm has a complete game. He's finished fourth, ninth and seventh in the last three years.

Betting isn't allowed here at Bushwood, even if we do slice. But Tony Finau and Justin Rose wouldn't be bad picks for those who seek value. Finau's ranked 13th in the world and had fifth- and 10th-place finishes at Augusta before last year's tie for 38th. And Rose has a pair of runner-up finishes in his last six starts there. That's almost an arm in the green jacket.

Last year's Masters was conducted in a quiet arena, whereas normally, the course on the hillside is the house that roars. This year, with limited patronage – so to speak – there will at least be some volume to go with the beauty and the chase for glory. The louder, the better.

ILLINOIS  
GOLFER  
COVER  
STORY

AMEN CORNER

14<sup>th</sup> TEE

RESTROOMS

15<sup>th</sup> TEE

GOLF SHOP

18<sup>th</sup> TEE

CONCESSIONS

# Fifty things you don't know about the Masters

TEXT AND PHOTOGRAPHY BY TIM CRONIN

Is there any back nine more familiar to golf viewers than Augusta National's? Probably not. Other tournaments are played at the same place every year, but this is Augusta, this is the Masters, and everybody watches.

Really, can you recall the last time you missed the back nine on Sunday? Last year, all right, it was in November and Dustin Johnson ran away and hid. But in April, with the azaleas blooming and the wisteria in bloom, and that piano player hiding down at Amen Corner tickling the ivories, this is appointment viewing.

So it will be this coming Sunday, when Jim Nantz is in his breathless mode and golfers leak oil like stock cars in a demolition derby.

But what do you know about Augusta beyond the basics? Read on for 50 things you don't know – probably, unless you've poked around the edges – about Augusta National.

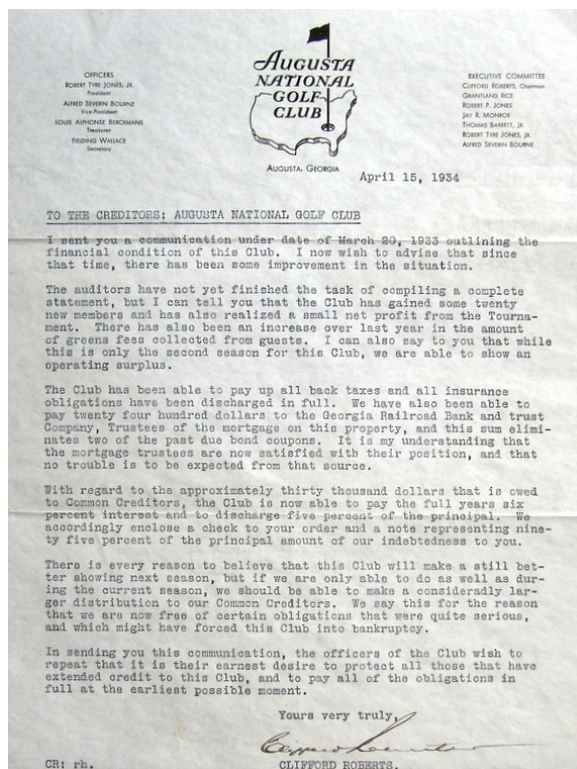
### 1. The club went bankrupt once.

Belly up. Left for the bankers to pounce on. It was the Great Depression, Bobby Jones and Clifford Roberts couldn't convince anyone to join, and they ran out of money. Creditors were numerous. Roberts wrote letters trying to stave off the worst, one of which is reproduced to the right.

Roberts, using his investment banker knowledge and Wall Street smarts, formed a for-profit company, Augusta National, Inc., that took the club and the property out of receivership and had enough capital to keep going through the war. To this day, Augusta National, Inc., is the owner, and the only private club that isn't a non-profit we know of. That's why nobody knows the inner financial workings of the operation. Tax returns for non-profits, including those for country clubs, can be accessed by the public. Closely-held Augusta National doesn't even have to explain who the stockholders are, or if there are any.

### 2. Architect Alister MacKenzie wasn't paid the full \$10,000 for his golf course design.

MacKenzie spent considerable time on the project, but was left short as construction progressed. Or at all, as members were few and far between at first, the construction bills had to be paid, and MacKenzie wasn't close to the front of



Illinois Golfer Archive

**TO THE CREDITORS** Clifford Roberts' letter to creditors in 1934 didn't stop a bankruptcy and reorganization in 1935.

the line. He died on Jan. 6, 1934, a little under three months before the first toonimint, without a final check from Augusta in his ledger.

### 3. There are only 300 members, give or take a few.

About a quarter are said to be from Augusta and vicinity. That leaves about 225 spots for the rest of the world. Explains why our invitation seems to be lost in the mail.

### 4. Fred Ridley does not rule by fiat.

Neither did Billy Payne, nor Hootie Johnson, nor Jack Stephens, nor Hord Hardin, nor Bill Lane. There's a board of directors. You just never hear of them.

### 5. Clifford Roberts did rule by fiat.

He'd toss members for the slightest infraction and looked like the guy who foreclosed on orphanages, but what he envisioned with Jones turned out to set the standard for understated elegance in sports.

### 6. Hootie is the best name for any club boss in history.

There will be no argument on this.

### 7. Hord Hardin was the best golfer in charge of the Masters aside from Jones.

He played in several Western Amateurs and was a WGA director from St. Louis before rising

to run the USGA and then Augusta.

**8. Hardin asked the worst question in the history of the Masters.**

To winner Seve Ballestros, in 1980: “Seve, people have asked me, how tall are you?”

Seve: “Six feet.”

Hord: “Six feet even?”

Way to dig, Hord, and remember, *60 Minutes* is next.

**9. Bobby Jones never broke par in the Masters.**

Honest. His lowest score was 72 in the third and fourth rounds of the inaugural Augusta National Invitation Tournament in 1934. He finished tied for 13th, his best showing.

**10. Quiz time: When Billy Payne was the chairman, what member did he say should visit more often and play more golf?** (Answer later.)

**11. Herbert Warren Wind, who named Amen Corner, does not have a corner of the press center named after him.**

But *Chicago Tribune* golf writer Charles Bartlett does. After his death in 1967, Augusta named the press lounge for Bartlett, complete with portrait. Two buildings later, it's still the Charles Bartlett Lounge.

**12. Lou Holtz is a member.**

How? He coached at Arkansas back in the day under athletic director Frank Broyles, a member.

**13. Why was Broyles a member?**

Because Jack Stephens, a prominent Razor-back backer, was a member and took a liking to Broyles.

**14. Why was Stephens a member?**

Because he owned Arkansas.

**15. Lynn Swann is a member.**

Someone has to catch those passes Holtz

SANDWICHES	
Egg Salad	1.50
Pimento Cheese	1.50
Bar-B-Que	3.00
Masters Club	2.50
Grilled Chicken Wrap	3.00
Classic Chicken Sandwich	3.00
Ham & Cheese on Rye	2.50
Turkey & Cheese on Wheat	2.50
BREAKFAST	
Served until 10 a.m.	
Masters Blend	
Fresh Brewed Coffee	1.50
Sausage Biscuit	1.50
Chicken Biscuit	1.50
Blueberry Muffin	1.00
Fresh Mixed Fruit	2.00
BEVERAGES	
Soft Drinks	1.50
Bottled Water	2.00
Fresh Brewed Iced Tea	1.50
Domestic Beer	4.00
Import Beer	5.00
SNACKS	
Candy / Chips	1.00
Peanuts / Crackers	1.00
Cookie	1.50
Georgia Peach	
Ice Cream Sandwich	2.00
Georgia Pecan	
Caramel Popcorn	1.50

Tim Cronin / Illinois Golfer

**BON APPETIT!** Prices have barely edged upwards since this photo was taken in 2015.

throws on the practice green.

**16. Lights out is midnight, preferably earlier.**

They roll up the sidewalks early inside the heavenly confines, never mind how late the Hooters down the street is open.

**17. Before lights out, the big game is bridge.**

And you thought it was Golden Tee.

**18. Two clubs are said to have more members who are also Augusta members than any others.**

Neither are named Pine Valley or Cypress Point. One is in Atlanta. Peachtree is also a Bob-by Jones (and Robert Trent Jones) design. One is in the northern suburbs. Old Elm, in Highland Park, is a bastion of tycoons who love golf, all of whom sign checks to cover the year's losses at the end of the season. Augusta is the winter hangout of many.

**19. You can't get a cheeseburger at the concession stands.**

Cliff Roberts disliked the smell of cooking wafting across the golf course, so the menu has always been pre-packaged sandwiches: pimento cheese, egg salad, chicken, and a recent addition: pulled pork. But a tasty chicken sandwich, chips and a soft drink will only set you back about \$6.50. Wrote Roberts in 1976, “We believe that one of the reasons the Masters is popular with patrons of the game is because they can obtain good food and drink at reasonable prices.”

**20. There are no brand names on the soft-drink machines.**

Trust us, it's Coca-Cola and their products. This is Georgia, remember, and besides, Jones was gifted a Coca-Cola distribution franchise after winning the Grand Slam.

**21. Condoleezza Rice isn't the only former Secretary of State to become a member.**

Rex Tillerson is a member, and the recently-deceased George Schulz was also a member. (He'll be mentioned again later.)

**22. NFL commissioner Roger Goodell is a member.**

Now you know why CBS didn't have any early games on Masters Sunday last November.

**23. Quiz time: True or false: CBS has always broadcast the Masters.** (Answer later.)

**24. There was a television blackout across**

**much of the South until 1969.**

Like Arthur and Bill Wirtz, Cliff Roberts was worried about TV hurting the live gate. The sellout crowds that piled in thanks to the Arnold Palmer-Jack Nicklaus rivalry ended that worry.

**25. Bert Yancey was so fixated on winning the Masters, he built clay models of the greens and studied them late into the night.**

Play-Doh didn't convert into dough. His best finish was third, in 1967 and 1968.

**26. Arnie's Army first assembled at Augusta National.**

The original members were soldiers from nearby Fort Gordon who took a liking to Palmer's swashbuckling style.

**27. The Fort Gordon soldiers helped with tournament communications.**

That's how those manual scoreboards, bigger and more numerous today, were first kept up to date.

**28. The 1986 Masters was the lowest-rated in ages until 1993. There's a connection.**

Outside of the Ryder Cup, Americans don't get too excited about international golfers, else more people would have watched Ballesteros vs. Greg Norman in '86 – presumably, the ratings went up in the last 90 minutes, when Nicklaus ran everyone over – or Bernhard Langer outlasting eventual Chicagoan Chip Beck in 1993. Jack couldn't help with that one.

**29. Nobody remembers, but in the 1960s and '70s, ABC's coverage of the Pro Bowlers Tour generally outrated golf on CBS or NBC, and battled the Masters on an equal footing.**

Call it Chris Schenkel's revenge. Schenkel, ABC's voice of golf, worked the Masters until going to ABC, and narrated the Masters highlight film for years after.



Tim Cronin / Illinois Golfer

**FOREVER THE KING** Arnold Palmer, surrounded as always by his Army, before the Par-3 Contest in 2012.

**30. Augusta moves at its own pace.**

Jones, Roberts and CBS producer Frank Chirkinian went around all 18 holes and determined camera positions in the early 1960s, but live 18-hole Sunday coverage didn't start until 2002.

**31. Sometimes the pace is quicker.**

A severe thunderstorm rolled through the property late on Tuesday of Masters week in 2012. A huge tree fell and partially destroyed a restroom building near the fifth green. By Thursday morning, the building had been rebuilt and there was no sign a tree was ever there or that even a leaf had landed on the building's roof.

**32. CBS was content with black-and-white sports broadcasts until Roberts sprung a surprise at the end of the 1965 broadcast.**

Said Roberts, "Next year, you'll see the Mas-

ters in color." Jaws dropped at CBS, but by the fall, CBS had spanking new color mobile units for sports and news specials and sure enough, the 1966 Masters was televised in every color of the rainbow. And those relative few who had color television swooned.

**33. Bill Gates and Warren Buffett are members.**

You know, just in case the club needs a quick \$20.

**34. There's no tipping at Augusta National.**

So much for a caddie or valet getting a quick \$20.

**35. The golf course is always in tournament condition for the members.**

The only exception is green speed. Augusta doesn't divulge a Stimpmeter reading, calling it



Tim Cronin / Illinois Golfer

**ONE WEEK A YEAR** Augusta National's members have to settle for their old practice area when warming up.

“member speed” or “tournament speed,” but soon after the greens were switched from Bermuda to bent in the early 1980s, the greens got to 18 – essentially the speed of light for grass – one Friday. Hord Hardin, astonished, told the superintendent not to cut them on Saturday.

**36. “Yes, Sir!” was first said by Ben Wright during the 1986 Masters telecast.**

Jack Nicklaus’ eagle on the 15th triggered Wright. Two holes later, Verne Lundquist used it on Nicklaus’ birdie, and that’s the one people remember.

**37. Nobody on CBS called anyone a “patron” in 1986.**

Augusta didn’t demand that for a few more years. Now, most golf writers at the Masters use

it as well, perhaps worried they’ll have to pay for lunch otherwise.

**38. The Sub-Air system was developed by superintendent Marsh Benson for the 12th green.**

It was designed to keep the green, usually shielded by sun, warm and thus alive during cool Augusta nights. Today’s Sub-Air system, such as



used on Cog Hill's Dubsread course, can warm or cool and pull moisture out of a green.

**39. The practice range for the tournament isn't used by the members.**

It's only for the Masters and associated events. Members use the old range and practice bunker in front of the clubhouse on either side of the Magnolia Lane driveway.

**40. Augusta National didn't plant the magnolias.**

They were planted by Dennis Raymond, the original owner of the property, who also built the home that is now the famed core of the clubhouse in 1854.

**41. Answer to question at No. 10:** Payne said business and racing mogul Roger Penske was hardly ever around. Of course, Roger's usually at a race track on the weekend.

**42. Sportswriter Grantland Rice came up with the spring date for the Masters.**

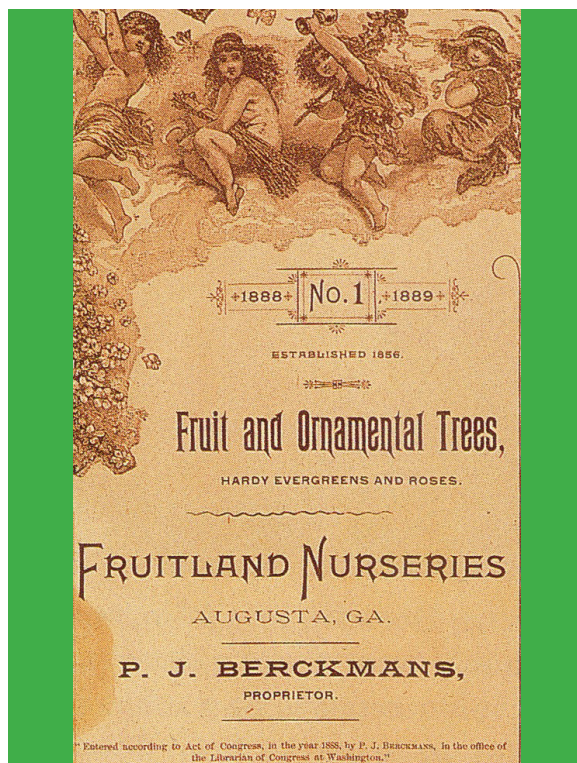
A pal of Bobby Jones and a co-founder, he told Jones sportswriters coming back from spring training in Florida would stop off to cover the tournament. Otherwise, Augusta was far off the beaten path. He was right on both counts.

**43. The one place in Augusta during Masters week that doesn't price gouge is Augusta National.**

Aside from the rock-bottom concessions prices, the prices in the golf shop are the same as you'd pay anywhere else. They make a mint thanks to volume. In a normal Masters week, it's one of the biggest retailers in the country.

**44. The Butler Cabin isn't where the butlers stay.**

It was named for Thomas Butler, pal of president and fellow Augusta member Dwight Eisenhower. Butler's cabin is next to the clubhouse,



Illinois Golfer Archive

**THE START** Fruitland Nurseries opened in 1858.

and the Eisenhower cabin is to the right of it as you stand by the 10th tee.

**45. CBS's broadcast host position is in the Butler Cabin basement.**

Upstairs, there are bedrooms, a living room and a kitchen, much like the other cabins – some three stories deep and perched on a hillside. Downstairs is room for cameras and the fireplace, which is a convenient backdrop for Jim Nantz and his friends.

**46. The Eisenhower Cabin was designed in 1953 by a local architect and the Secret Service.**

Ike and Mamie stayed there often on visits, though never during the Masters, showing up the day after instead. And Ronald Reagan and his advisors – including member George Schulz, re-member, the Secretary of State and member – in part planned the invasion of Grenada there.

**47. Reagan was on the course when a gunman broke through a side gate and invaded the pro shop, taking five people hostage and demanding to see Reagan about losing his job.**

Reagan called on a cell phone from the 16th green, but the connection was bad, and the gunman pulled the phone out of the wall. He was eventually captured and served three years in prison. Today, there are barriers at the entrance to Magnolia Lane.

**48. Answer to question at No. 23:** On television in the U.S., yes. But before CBS heisted the rights in 1956, NBC covered the Masters on radio. CBS sportscaster John Derr's finagling landed the prize for television. NBC never knew what hit them. A tradition unlike any other, indeed.

**48. The Par-3 Course has 11 holes.**

The first two aren't used for the Par-3 Tournament – canceled this year because of COVID-19.

**49. The prices for Berckmans Place, the exclusive hospitality area behind the fifth hole, have gone up.**

They're \$10,000 a ticket now for the week, up from the original \$6,000. How many do you want? At least it's all you can eat and drink.

**50. That garden spot is named for Louis Berckmans, whose family owned the property from 1858 to 1910.**

The Fruitlands Nursery he founded was the foundation for the flora of Augusta National today. Beyond the original manor house, he wouldn't recognize it.



# AROUND AUGUSTA

## Wallace sixth, Keeter ninth in Drive, Chip and Putt

BY TIM CRONIN

It was a trip to remember for Logan Keeter of Northbrook and Reese Wallace of South Barrington. After a year's wait because of the COVID-19 pandemic, they were in the Boys and Girls 10-11 Divisions of the Drive, Chip & Putt finals at Augusta National Golf Club last weekend.

Things went better for Wallace than for Keeter. She finished sixth in her bracket thanks to a second-place showing in the chipping competition. Keeter's fourth-place in putting pulled him up to ninth in the 10-boy field after a tough start.

Wallace, who says her 8-iron is her favorite club, knocked her two chip shots to 9 feet and 8 feet 3 inches to place second in chipping after finishing seventh in driving with an average of 181 feet 7 inches. Her putts on Augusta National's 18th green, one uphill and one downhill, ended up 4 feet 2 inches and 3 feet 6 inches from their targets, but in a fast field, that was only good for fifth of 10 with a total of 18 points.

Keeter's favorite club, his driver, betrayed him. He sent both of his drives off the grid and ended up last in the category. His chips to 13 feet 1 inch and 9 feet 6 inches kept him there, but he rallied in putting. His uphill putt to 3 feet 2 inches and downhill putt to 1 foot 9 inches – many a Masters hopeful would had taken that to the traditional final round pin placement – put him fourth



*Keeter*



*Wallace*

in putting and, with nine points, ninth overall.

Both will be eligible for the 12-13 bracket this year and the 14-15 division down the line. The area, which competes in the Midwest Division, has not yet had an individual go to the DCP finals twice.

### **Masters sales expand**

It's been done discreetly, as is typical of Augusta National, but, following last year's pandemic-inspired move to offer ticket holders online sales of merchandise, the club has expanded that market.

Some subscribers to the Masters newsletter, which arrives in e-mail boxes each morning during the tournament, were offered access to the online "Masters Patron Shop," a website that features hundreds of Masters-related products usually available tournament week in the mammoth golf shops at the club.

Shirts, pullovers, hats, boxer shorts – we kid you not – and all manner of knickknacks that are usually gobbled up by those lucky enough to be on the grounds were on the website. All that was missing was the usual hubbub of the shop itself, with spectators carrying shopping carts close to overflowing with goodies for themselves, family and friends and staggering to the checkout line, where their credit cards will bend from the weight on them.

For instance, given the world we live in, who doesn't need hand lotion with a Masters motif? You could get that, or the perennial favorite, the Masters pin flag, or one of dozens of different style hats. You name it, the Masters logo, the most recognizable in golf, and in the top 10 in sports, is plastered on it.

The big question is, why doesn't Augusta National open the online shop to everyone? The theory is the club wants to limit availability to preserve a measure of exclusivity. One would venture to guess the limited time the shop itself is open – on site for the days of the tournament, plus the Augusta National Women's Amateur and the Drive, Chip & Putt contest, three weeks for the online version – itself limits availability.

We know the club doesn't need extra revenue, based on how filled the big store is during a normal tournament. There can't be too many people who don't buy something on what might be their only trip to the old nursery.



## The Bookshelf by Tim Cronin

# The ultimate Masters bedside reader

**A**side from record books, media guides and a slew of tournament annuals, the office library has about 10 books devoted to the Masters.

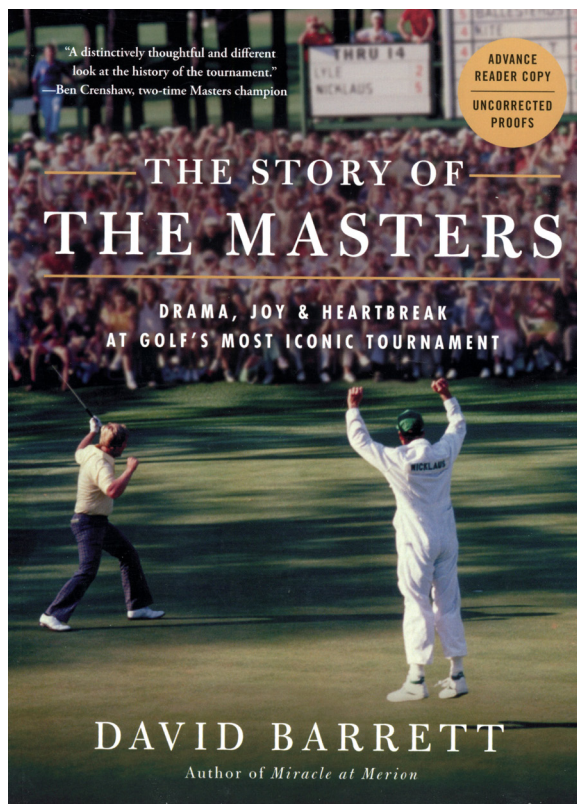
The most recent, “The Story of the Masters” by David Barrett, covers an aspect that nobody had managed to consider before: A thorough and lively year-by-year history of the tournament.

Other authors have looked at one year – forests have been felled in retelling the victory of Jack Nicklaus in 1986 between hard covers – or covered controversy off the course, but nobody until now has tackled the telling of the Masters from the start in 1934 through Dustin Johnson’s record triumph in November.

Barrett was the right guy to do so. An alumna of *The Augusta Chronicle*, which, with the possible exception of *The Indianapolis Star* and the Indy 500, covers the Masters more thoroughly than any newspaper covers any other sports event, Barrett has been there. He’s been there in his position as a senior editor with *Golf*, and now as a freelancer.

So when Barrett tells you winner Horton Smith pitched from 75 yards to 10 feet and birdied from there on the par-5 17th hole in the final round of the first Masters, believe it. And remember that No. 17 in 1934 has been No. 8 since then.

When Barrett tells you the cheer for Bryon Nelson’s winning putt in 1942, the lone wartime Masters, was drowned out by a bomber’s training run from then-Camp Gordon, believe it.



**The Story of the Masters**  
 Drama, Joy and Heartbreak at Golf’s Most  
 Iconic Tournament  
**By David Barrett**  
 Tatra Press; \$30.00 suggested

This is a deeply-researched work. Barrett has gone through microfilm of the *Chronicle* and various other papers, coverage by *Golf World* and *Sports Illustrated*, watched CBS video, and dug into his own notes. As a result, on most every page is a reminder of something we’d forgotten or a revelation of something we didn’t know. Who remembers that in 1996, when Greg Norman collapsed as Nick Faldo charged down the stretch, that the Shark had birdied nine of the final 12 holes in the first round for a record-tying 63?

Or that in 1975, when Nicklaus, Johnny Miller and Tom Weiskopf staged the greatest three-way battle in Masters annals, sneaking into a tie for fourth was Hale Irwin thanks to a closing 64?

It’s also a fun read. We learn that Sam Snead played two holes barefoot in 1942. The story behind that is as odd as the happening. We learn that Jack Nicklaus called himself “completely relaxed” in the final round of his nine-stroke victory in 1965.

The book’s subtitle, “Drama, Joy and Heartbreak at Golf’s Most Iconic Tournament,” has all of that and more. The only thing missing is the recipe for a pimento cheese sandwich. You can almost smell the azaleas.

Barrett might not have considered it, but he’s authored a perennial. Update the book every year with the story of the just-completed Masters and voila! A new, updated edition ready for sale the following spring. To paraphrase Roberto De Vincenzo, you would be a stupid not to buy it.

# THE DIRECTORY

## GREATER CHICAGO COOK COUNTY / NORTH

**Anetsberger** 9: 27 / 1,128 / unrated  
1750 Techy Ct., Northbrook • (847) 291-2971 • www.sportsmansgolf.com Michael Wenzel

**Arlington Lakes** 18: 68 / 5,336 / 65.8 / 115  
1211 S. New Wilke Rd., Arlington Heights • (847) 577-3030 • www.ahpd.org/programs/golf Tim Govern (GM)

**Bartlett Hills** 18: 71 / 6,463 / 71.7 / 130  
800 W. Oneida, Bartlett • (630) 837-2741 • www.bartletthills.com Phil Lenz

**Billy Caldwell** 9: 35 / 3,108 / 69.6 / 115  
6150 N. Caldwell Ave., Chicago • (773) 792-1930 • www.forestpreservegolf.com

**Bridges of Poplar Creek** 18: 70 / 6,500 / 71.2 / 136  
1400 Poplar Creek Dr., Hoffman Estates • (847) 884-0219 • www.poplarcreekcc.com  
Brian Bechtold

**Canal Shores (Peter Jans)** 18: 60 / 3,904 / 57.9 / 86  
1031 Central St., Evanston • (847) 475-9173 • www.canalshores.org Tony Frandria (Spt.)

**Chick Evans** 18: 71 / 5,626 / 67.2 / 122  
6145 Golf Rd., Morton Grove • (847) 965-5353 • www.forestpreservegolf.com Grit Suyasri

**Edgebrook** 18: 66 / 4,567 / 61.2 / 88  
6100 N. Central Ave., Chicago • (773) 763-8320 • www.forestpreservegolf.com Jim Tourloukis (GM)

**Fox Run** 18: 70 / 6,287 / 70.1 / 119  
333 Plum Grove Rd., Elk Grove Village • (847) 228-3544 • www.foxrungolfinks.com  
Thomas Klaas (GM)

**The Glen Club** 18: 72 / 7,149 / 74.8 / 140  
2901 W. Lake Ave., Glenview • (847) 724-7272 • www.theglenclub.com Alex Prior

**Glencoe** 18: 72 / 6,527 / 71.6 / 130  
621 Westley Rd., Glencoe • (847) 835-0250 • www.glencoeclub.com Matt Radde

**Glenview Prairie** 9: 31 / 1,955 / 29.7 / 94  
2800 W. Lake Ave., Glenview • (847) 657-1637 • www.golfglenview.com Kristen Kechik (GM)

**Glenview Park** 18: 70 / 6,109 / 68.9 / 123  
800 Shermer Rd., Glenview • (847) 724-0250 • www.golfglenview.com Michael Stone

**Golf Center Des Plaines** 9: 27 / 1,050 / 70.0 / 113  
353 River Rd., Des Plaines • (847) 803-4653 • www.dpparks.org/golfcenter

**Grayslake** 9: 27 / 1,137 / unrated  
2150 Drury Ln., Grayslake • (847) 548-4713 • www.glpd.com Mike Perez (GM)

**Highland Woods** 18: 72 / 6,934 / 72.5 / 124  
2775 Ela Rd., Hoffman Estates • (847) 359-5850 • www.forestpreservegolf.com Joe Bidro (GM)

**Hilldale** 18: 71 / 6,432 / 71.6 / 135  
1625 Ardwick Dr., Hoffman Estates • (847) 310-1100 • www.hilldalegolf.com

**Indian Boundary** 18: 72 / 6,068 / 69.0 / 116  
8600 W. Forest Preserve Ave., Chicago • (773) 625-9630 • www.forestpreservegolf.com

**Lake Park** 9: 27 / 1,515 / unrated  
1015 Howard St., Des Plaines • (847) 391-5730 • www.dpparks.org

## ABOUT THE DIRECTORY

This is the most complete public course directory to be found in any golf publication in Illinois. Included are all public courses known to be open in Illinois, practice ranges in the nine-county Chicago area, plus selected courses elsewhere in Indiana, Wisconsin and Michigan. Illinois listings outside Chicago area are by zone, with county also listed for reference.

Course detail (yardage, rating, slope from back tees) supplied by courses and the CDGA. Head pro or GM listed if known. Please e-mail changes to illinoisgolfer@earthlink.net. **Expanded listings** are available; please e-mail or call (708) 638-1164.

**Makray Memorial** 18: 72 / 7,015 / 74.1 / 132  
1010 S. Northwest Hwy., Barrington • (847) 381-6500 • www.makraygolf.com Don Habjan

**Marovitz (Waveland)** 9: 36 / 3,265 / 35.2 / 124  
3600 N. Recreation Dr. (at Addison), Chicago • (312) 742-7930 • www.cpdgolf.com  
Mark McCord (GM)

**Mount Prospect** 18: 71 / 6,305 / 71.3 / 135  
600 S. See Gwun Ave. (at Shabonee), Mount Prospect • (847) 259-4200 • www.mppd.org/golf.php Brett Barcel

**Nickol Knoll** 9: 27 / 1,163 / unrated  
3800 N. Kennebec Ave., Arlington Heights • (847) 590-6050 • www.ahpd.org/programs/golf/nickol Tim Govern (GM)

**Old Orchard** 18: 70 / 6,119 / 70.1 / 130  
700 W. Rand Rd., Mount Prospect • (847) 255-2025 • www.olorchardcc.com Doug Brezeau

**Palatine Hills** 18: 72 / 6,800 / 72.5 / 127  
512 W. Northwest Hwy., Palatine • (847) 359-4020 • www.palatinehills.org Dan Hotchkin

**Rob Roy** 9: 36 / 3,022 / 37.8 / 119  
505 E. Camp McDonald Rd., Prospect Heights • (847) 253-4544 • www.robroygc.com

**Robert A. Black** 9: 33 / 2,361 / 31.7 / 100  
2045 W. Pratt Blvd., Chicago • (312) 742-7931 • www.cpdgolf.com Jerry Losos

**Schaumburg**  
Tournament / Baer 18: 71 / 6,644 / 71.7 / 130  
Players 9: 35 / 3,189 / 34.7 / 124  
401 N. Roselle Rd., Schaumburg • (847) 885-9000 • www.schaumburggolf.com  
Preston "Pepi" Irwin

**Sportsman's** Classic 18: 70 / 6,278 / 70.4 / 126  
East 9: 35 / 3,010 / 34.6 / 118  
3535 Dundee Rd., Northbrook • (847) 291-2351 • www.sportsmansgolf.com Greg Baron

**Tam O'Shanter** 9: 33 / 2,457 / 63.2 / 110  
6700 W. Howard St., Niles • (847) 965-2344 • www.niles-parks.org Chris Urgo

**Traditions at Chevy Chase** 18: 72 / 6,610 / 71.9 / 128  
1000 N. Milwaukee Ave., Wheeling • (847) 465-2300 • www.chevychasecountryclub.com  
Margie Arnold (GM)

**Twin Lakes** 9: 29 / 1,460 / 35.0 / 113  
1200 E. Lake Dr., Palatine • (847) 934-6050 • saltcreek.multisportssystem.com

**Villa Olivia** 18: 72 / 6,510 / 72.4 / 124  
Rt. 20 & Naperville Rd., Bartlett • (630) 289-1000 • www.villaolivia.com/golfinfo

**Walnut Greens** 9: 27 / 1,078 / unrated  
1150 N. Walnut Ln., Schaumburg • (847) 490-7878 • www.walnutgreengolf.com

**Weber Park** 9: 27 / 1,095 / 35.5 / 113  
9300 Weber Park Pl., Skokie • (847) 674-1400 x3600 • www.skokieparkdistrict.org

**Willow Hill** 9: 35 / 2,895 / 34.2 / 118  
1350 Willow Rd., Northbrook • (847) 480-7888 • www.willowhillgolfcourse.com Adam Kwiatkowski

**Wilmette** 18: 70 / 6,400 / 70.9 / 130  
3900 Fairway Dr., Wilmette • (847) 256-9777 • www.golfwilmette.com Jamie Locke

**Winnetka** 18: 71 / 6,517 / 72.6 / 130  
9: 27 / 1,194 / unrated  
1300 Oak St., Winnetka • (847) 501-2050 • www.winpark.org/golf-club Cortney Miller

## COOK COUNTY / SOUTH

**Calumet** 18: 71 / 6,619 / 71.3 / 132  
2136 W. 175th St., Homewood • (708) 799-2230 • www.calumetcc.com

**Cog Hill** No. 1 / Blue 18: 70 / 6,282 / 69.7 / 118  
No. 2 / Ravines 18: 72 / 6,639 / 71.8 / 124  
No. 3 / Red 18: 72 / 6,402 / 69.7 / 116  
No. 4 / Dubsdread 18: 72 / 7,616 / 77.8 / 151  
12294 Archer Ave., Palos Park • (630) 257-5872 • www.coghillgolf.com

**Coyote Run** 18: 71 / 6,478 / 69.5 / 123  
Practice 3: 9 / 373 / unrated  
800 Kedzie Ave., Flossmoor • (708) 957-8700 • www.coyoterungolf.com Brian Smith

**Dunne National** 18: 72 / 7,262 / 75.4 / 142  
16310 S. Central Ave., Oak Forest • (708) 429-6886 • www.forestpreservegolf.com

**Flagg Creek** 9: 33 / 2,493 / 31.9 / 104  
6939 S. Wolf Rd., Countryside • (708) 246-3336 • www.flaggcreekgolfcourse.com Billy Rosinia

**Fountain Hills** 9: 36 / 3,233 / 35.1 / 112  
12601 S. Kedzie Ave., Alsip • (708) 388-4653 • www.fountainhillsgc.com Rich Gottardo (GM)

**Fresh Meadow** 18: 70 / 6,283 / 70.1 / 116  
2144 S. Wolf Rd., Hillside • (708) 449-0000 • www.freshmeadowgc.com Michael Huber

**Gleneagles** Red / Lakes 18: 70 / 6,029 / 68.0 / 116  
White / Woodland 18: 70 / 6,302 / 70.1 / 124  
13070 McCarthy Rd., Palos Park • (630) 257-5466 • www.golfgleneagles.com Gregg Miller

**Glenwoodie** 18: 72 / 6,902 / 71.6 / 125  
19301 S. State St., Glenwood • (708) 758-1212 • www.glenwoodiegolf.com Phil Robbins

Don't see your favorite public course listed? Call us at (708) 638-1164.

<b>Harborside International</b> Port 18: 72 / 7,164 / 74.8 / 136 Starboard 18: 72 / 7,166 / 74.7 / 135 11001 S. Doty Ave. East, Chicago • (312) 782-7837 • www.harborsideinternational.com Joel Voss	
<b>Hickory Hills</b> 18: 71 / 6,018 / 67.9 / 116 9: 30 / 1,560 / unrated 8201 W. 95th St., Hickory Hills • (708) 598-5900 • www.hickoryhillsgolfclub.com	
<b>Jackson Park</b> 18: 70 / 5,444 / 65.7 / 109 6401 W. Richard Dr., Chicago • (773) 667-0524 • www.cdpgolf.com Tyrone Banks (GM)	
<b>Joe Louis The Champ</b> 18: 72 / 6,742 / 71.4 / 124 13100 S. Halsted St., Riverdale • (708) 849-1731 • www.forestpreservegolf.com Bryan Carroll	
<b>Marquette Park</b> 9: 36 / 3,245 / 35.5 / 119 6700 S. Kedzie Ave., Chicago • (312) 747-2761 • www.cdpgolf.com Steve McDaniels (GM)	
<b>Meadowlark</b> 9: 36 / 3,404 / 35.9 / 114 11599 W. 31st St., Oak Brook • (708) 562-2977 • www.forestpreservegolf.com	
<b>Meadows of Blue Island</b> 18: 71 / 6,581 / 71.3 / 121 2802 W. 123rd St., Blue Island • (708) 385-1994 • www.meadowsgc.com Jerry Vidovic	
<b>Oak Hills</b> 9: 34 / 2,520 / 33.0 / 109 13200 S. 76th Ave., Palos Heights • (708) 448-5544 • www.oakhills.com Allan Parkes	
<b>Odyssey</b> 18: 72 / 7,095 / 73.1 / 131 19110 S. Ridgeland Ave., Tinley Park • (708) 429-7400 • www.odysseycountryclub.com	
<b>Palos Southmoor</b> 9: 35 / 3,154 / 70.4 / 128 13100 Southwest Hwy., Orland Park • (708) 448-6550 • www.paloscountryclub.com	
<b>Palos Hills</b> 9: 35 / 2,838 / 67.4 / 119 7301 W. 105th St., Palos Hills • (708) 599-0202 • www.paloshillswb.org/golf Gwen Leddy (GM)	
<b>Ravisloe</b> 18: 70 / 6,321 / 70.8 / 127 18231 S. Park Ave., Homewood • (708) 798-5600 • www.ravisloecountryclub.com	
<b>River Oaks</b> 18: 72 / 5,952 / 69.3 / 119 1 Park Ave., Calumet City • (708) 868-4090 • www.forestpreservegolf.com	
<b>Ruffled Feathers</b> 18: 72 / 6,898 / 73.7 / 140 1 Pete Dye Dr., Lemont • (630) 257-1000 • www.ruffledfeathersgc.com Gordon Acton	
<b>Silver Lake</b> North 18: 72 / 6,826 / 72.6 / 124 South 18: 70 / 6,337 / 70.2 / 124 Rolling Hills 9: 29 / 1,587 / 27.1 / unsloped 14700 S. 82nd Ave., Orland Park • (708) 349-6940 • www.silverlakecc.com	
<b>South Shore</b> 9: 33 / 2,713 / 32.9 / 112 7059 S. South Shore Dr., Chicago • (312) 955-1892 • www.cpdgolf.com Adrienne Carney (GM)	
<b>Stony Creek</b> 18: 65 / 5,004 / 62.5 / 103 5850 W. 103rd St., Oak Lawn • (708) 857-2433 • www.golfstonycreek.com	
<b>Water's Edge</b> 18: 72 / 6,904 / 72.9 / 131 7205 W. 115th St., Worth • (708) 671-1032 • www.watersedgegolf.com Jim Torlukis (GM)	
<b>White Mountain</b> 9: 29 / 1,741 / 27.1 / unsloped 9901 W. 179th St., Orland Park • (708) 478-4653 • www.whitemountaingolfpark.com Mike Camerano	

## LAKE COUNTY / ILLINOIS

**Arboretum** 18: 72 / 6,447 / 71.6 / 137  
401 Half Day Rd., Buffalo Grove • (847) 913-1112 • www.arboretumgolf.com Carmen Molinaro

<b>Barrington Park District</b> 235 Lions Dr., Barrington • (847) 381-0687 • www.barringtonparkdistrict.com	5: 15 / 675 / unrated
<b>Bittersweet</b> 875 Almond Rd., Gurnee • (847) 855-9031 • www.bittersweetgolf.com	18: 72 / 6,754 / 72.8 / 130 Sean Joyce
<b>Bonnie Brook</b> 2800 N. Lewis Ave., Waukegan • (847) 360-4730 • www.waukegangolf.org	18: 72 / 6,701 / 72.3 / 128 Tony Tinetti
<b>Brae Loch</b> 33600 N. Hwy. 45, Grayslake • (847) 968-3444 • www.lcfdp.org/brae_loch	18: 70 / 5,876 / 67.5 / 114 Bill Ebdon
<b>Buffalo Grove</b> 48 Raupp Blvd., Buffalo Grove • (847) 459-5520 • www.buffalogrovegolf.com	18: 72 / 6,693 / 72.1 / 127 Joe Bridges
<b>Countryside</b> 20800 W. Hawley St., Mundelein • (847) 968-3466 • www.lcfdp.org/countryside	Traditional 18: 72 / 6,397 / 70.3 / 118 Prairie 18: 72 / 6,757 / 71.4 / 121
<b>Crane's Landing Marriott</b> 10 Marriott Dr., Lincolnshire • (847) 634-5935 • www.craneslandinggolf.com	18: 70 / 6,290 / 71.1 / 130 Tim Pagel
<b>Deerfield</b> 1201 Saunders Dr., Riverwoods • (847) 945-8333 • www.deerfieldgolf.org	18: 72 / 6,816 / 72.4 / 131 Jason Minnina
<b>Deerpath</b> 500 W. Deerpath Rd., Lake Forest • (847) 615-4290 • www.deerpathgolf.com	18: 70 / 6,255 / 70.6 / 130 Rick Walrath (GM)
<b>Foss Park</b> 3124 Argonne Dr., North Chicago • (847) 689-7490 • www.fossparkgolf.org	18: 72 / 6,839 / 71.9 / 113 Gabe Monroe
<b>Fox Lake</b> 7220 State Park Rd., Fox Lake • (847) 587-6411 • www.foxlakecc.net	18: 72 / 6,359 / 71.3 / 126 Vince Juarez (GM)
<b>Greenshire</b> 38727 N. Lewis Ave., Beach Park • (847) 360-4777 • www.waukegangolf.org	9: 27 / 1,265 / unrated
<b>Heather Ridge</b> 5900 HeatherRidge Dr., Gurnee • (847) 367-6010 • www.heatheridgegolf.com	9: 35 / 3,007 / 35.1 / 117 Dirk Skelley
<b>Hickory Knoll</b> 24745 W. Monaville Rd., Lake Villa • (847) 356-8640 • www.golfhickoryknoll.com	9: 30 / 1,780 / 35.5 / 113
<b>Lake Bluff</b> 355 W. Washington St., Lake Bluff • (847) 234-6771 • www.lakebluffgolfclub.com	18: 72 / 6,589 / 71.3 / 124 Ed Heiser
<b>Lakemoor</b> 29000 W. Sullivan Lake Rd., Lakemoor • (815) 759-0011 • no website	18: 72 / 6,334 / 70.5 / 124
<b>Libertyville</b> 870 Country Club Dr., Libertyville • (847) 362-5733 • www.libertyville.com	9: 27 / 1,205 / 35.0 / 113 Connie Kowal (GM)
<b>Midlane</b> 4555 W. Yorkhouse Rd., Wadsworth • (847) 623-4653 • www.midlaneresort.com	18: 71 / 6,681 / 73.1 / 131 Michael Chappell
<b>Pine Meadow</b> 1 Pine Meadow Ln., Mundelein • (847) 566-4653 • www.pinemeadowgc.com	18: 72 / 7,297 / 74.8 / 138 Dennis Johnsen
<b>Renwood</b> 701 E. Shorewood Rd., Round Lake Beach • (847) 231-4711 • www.renwoodgolf.com	18: 72 / 6,062 / 69.0 / 124 Brad Rouse
<b>Shepherd's Crook</b> 351 N. Greenbay Rd., Zion • (847) 872-2080 • www.shepherdsCrook.org	18: 71 / 6,769 / 72.1 / 128 Larry Myers (GM)
<b>Shiloh</b> 23rd St. and Bethesda Rd., Zion • (847) 746-5500, x420 • www.shilohparkgolf.com	9: 35 / 2,900 / 67.2 / 118
<b>Steeple Chase</b> 200 N. La Vista Dr., Mundelein • (847) 949-8900 • www.mundeleinparks.org/steeplechase.html	18: 72 / 6,827 / 73.1 / 139

<b>Stonewall Orchard</b> 25675 W. Hwy. 60, Grayslake • (847) 740-4890 • www.stonewallorchard.com	18: 72 / 7,124 / 74.7 / 148 Jeff Pajula
<b>Sunset Valley</b> 1390 Sunset Rd., Highland Park • (847) 432-7140 • www.sunsetvalleygolfcourse.org	18: 72 / 6,484 / 71.8 / 131 Rob Saunders (GM)
<b>ThunderHawk</b> 39700 N. Lewis Ave., Beach Park • (847) 872-4295 • www.lcfdp.org	18: 72 / 7,031 / 73.8 / 136 Bill Ebdon
<b>Valley Ridge</b> 40150 N. Rt. 59, Antioch • (847) 395-3004 • www.antiochgolfclub.com	18: 71 / 6,183 / 70.2 / 130 Vince Juarez
<b>Vernon Hills</b> 291 Evergreen Dr., Vernon Hills • (847) 680-9310 • www.vernonhillsgolf.com	9: 34 / 2,836 / 34.2 / 120 O.B. Sanders (GM)
<b>Village Green</b> 2501 N. Midlothian, Mundelein • (847) 566-7373 • www.villagegreenc.com	18: 70 / 6,018 / 68.6 / 117 Tim Miles Jr. (GM)
<b>White Deer Run</b> 250 W. Gregg's Pkwy., Vernon Hills • (847) 680-6100 • www.whitedeergolf.com	18: 72 / 7,101 / 74.5 / 142 Bob Malpede
<b>Willow Glen</b> 2821 Great Lakes Dr., Great Lakes • (847) 688-4593 • www.mwrgl.com/recreation/golf/golf.htm	18: 71 / 6,637 / 72.1 / 125 Dan Kraft (GM)

## DUPAGE COUNTY

<b>Apple Orchard</b> 692 W. Stearns Rd., Bartlett • (630) 540-4807 • www.bartlettsparks.org/Golf/general	9: 27 / 1,275 / unrated Tony Nuzzo
<b>Arrowhead</b> 26W151 Butterfield Rd., Wheaton • (630) 653-5800 • www.arrowheadgolfclub.org	South-East 18: 72 / 6,738 / 72.5 / 132 combinations vary West 9: 36 / 3,295 / 35.9 / 130 Bruce Stoller (GM)
<b>Bloomington</b> 181 Glen Elyn Rd., Bloomington • (630) 529-6232 • www.bloomingtonaleg.com	18: 71 / 6,251 / 70.2 / 123 Dave Shallcross
<b>Cantigny</b> 18-hole combinations vary 27W270 Mack Rd., Wheaton • (630) 668-8463 • www.cantignygolf.com	Woodside 9: 36 / 3,587 / 37.6 / 143 Lakeside 9: 36 / 3,437 / 36.6 / 136 Hillside 9: 36 / 3,394 / 36.2 / 135 Youth Short 9: 27* / 954 / unrated Patrick Lynch
<b>Carriage Greens</b> 8700 Carriage Greens Dr., Darien • (630) 985-3400 • www.carriagegreens.com	18: 70 / 6,395 / 71.4 / 126 James Sims (GM)
<b>Country Lakes</b> 1601 Fairway Dr., Naperville • (630) 420-1060 • website inactive	18: 73 / 6,656 / 71.9 / 121 Mike Jablecki
<b>Eaglewood Resort</b> 1401 Nordic Rd., Itasca • (630) 773-1400 • www.eaglewoodresort.com	18: 72 / 6,017 / 68.2 / 120 Andy Carr
<b>Downers Grove</b> 2420 Haddon Dr., Downers Grove • (630) 963-1306 • www.dgparks.org	9: 36 / 3,233 / 72.6 / 131
<b>Glendale Lakes</b> 1550 President St., Glendale Heights • (630) 260-0018 • www.glendalelakes.com	18: 71 / 6,190 / 69.8 / 125 Jennifer Ferrell
<b>Green Meadows</b> 18W201 W. 63rd St., Westmont • (630) 810-5330 • www.dupagegolf.com	9: 30 / 1,888 / unrated Dean Westrom
<b>Klein Creek</b> 1N333 Pleasant Hill Rd., Winfield • (630) 690-0101 • www.kleincreek.com	18: 72 / 6,701 / 72.6 / 137 Matte Allman

When you check in to play, tell the clerk you saw the listing in Illinois Golfer!

<b>Links &amp; Tees</b>	<b>9: 27 / 1,161 / unrated</b>	
900 W. Lake St., Addison • (630) 458-2660 • www.addisonparks.org/links_and_tees		
<b>Maple Meadows</b>	<b>18: 70 / 6,438 / 71.0 / 126</b>	
East <b>9: 34 / 2,815 / 33.7 / 121</b>		
272 S. Addison Rd., Wood Dale • (630) 616-8424 • www.dupage.golf Chris Malek (GM)		
<b>Oak Brook</b>	<b>18: 72 / 6,541 / 71.1 / 126</b>	
2606 York Rd., Oak Brook • (630) 990-3032 • www.oak-brook.org Trey Van Dyke		
<b>Pheasant Run Resort</b>	<b>18: 72 / 6,424 / 70.6 / 122</b>	
4051 E. Main St., St. Charles • (630) 584-4914 • www.pheasantrun.com Robert Jan		
<b>Prairie Landing</b>	<b>18: 72 / 6,950 / 73.8 / 139</b>	
2325 Longest Dr., West Chicago • (630) 208-7600 • www.prairielanding.com Brian King		
<b>Preserve at Oak Meadows</b>	<b>18: 72 / 7,015 / TBA / TBA</b>	
900 N. Wood Dale Rd., Addison • (630) 595-0071 • www.dupagegolf.com Austin Kopp		
<b>River Bend</b>	<b>9: 36 / 3,300 / 70.8 / 126</b>	
5900 S. Rt. 53, Lisle • (630) 968-1920 • www.riverbendgolfclub.org Debbie Culbertson		
<b>St. Andrews</b>	<b>18: 71 / 6,920 / 71.8 / 124</b>	
Joe Jemsek <b>18: 72 / 6,770 / 72.0 / 120</b>		
3 N. 441 Rt. 59, West Chicago • (630) 231-3100 • www.standrewsgc.com Dave Erickson		
<b>Salt Creek</b>	<b>18: 63 / 3,946 / unrated</b>	
701 W. Thorndale Ave., Wood Dale • (630) 773-0184 • www.saltcreekgolfclub.com Tony Perry		
<b>Seven Bridges</b>	<b>18: 72 / 7,111 / 74.6 / 144</b>	
1 Mulligan Dr., Woodridge • (630) 964-7777 • www.sevenbridgesgolfclub.com Ben Nachtwey		
<b>Springbrook</b>	<b>18: 72 / 6,896 / 73.0 / 130</b>	
2220 W. 83rd St., Naperville • (630) 848-5060 • www.springbrookgolfcourse.org Mike Lzyun		
<b>Streamwood Oaks</b>	<b>9: 36 / 3,404 / 72.9 / 125</b>	
565 Madison Dr., Streamwood • (630) 483-1881 • www.streamwood.org		
<b>Sugar Creek</b>	<b>9: 32 / 2,344 / 62.0 / 106</b>	
500 E. Van Buren, Villa Park • (630) 834-3325 • www.sugarcreekgolfcourse.org Cory Ferrell		
<b>Twin Lakes</b>	<b>9: 28 / 1,381 / unrated</b>	
400 W. 59th St., Westmont • (630) 852-7167 • www.wpd4fun.com Ashley Medley (GM)		
<b>Village Greens of Woodridge</b>	<b>18: 72 / 6,638 / 71.2 / 121</b>	
1575 W. 75th St., Woodridge • (630) 985-3610 • www.villagegreensgolf.com Brandon Evans		
<b>Village Links of Glen Ellyn</b>	<b>18: 72 / 7,208 / 74.9 / 138</b>	
9: 36 / 3,303 / 35.7 / 129		
485 Winchell Way, Glen Ellyn • (630) 469-8180 • www.villagelinksgolf.com Noel Allen		
<b>Western Acres</b>	<b>9: 35 / 3,052 / 69.2 / 111</b>	
2400 W. Butterfield Rd., Lombard • (630) 469-6768 • www.westernacres.com Don Voth		
<b>White Pines</b>	<b>East 18: 70 / 6,371 / 71.1 / 127</b>	
West <b>18: 72 / 6,624 / 71.5 / 127</b>		
500 W. Jefferson St., Bensenville • (630) 766-0304 • www.whitepinesgolf.com Mike Huber (GM)		
<b>Willow Crest</b>	<b>18: 70 / 6,474 / 71.1 / 132</b>	
3500 Midwest Rd., Westmont • (630) 850-5515 • www.oakbrookhillsresortchicago.com/golf/golf.htm		
<b>Zigfield Troy</b>	<b>9: 27 / 1,089 / unrated</b>	
1535 75th St., Woodridge • (630) 985-4653 • www.zigfieldtroygolf.com Tim Troy, Dennis Troy		

Follow Illinois Golfer on Twitter:  


## WILL COUNTY

<b>Balmoral Woods</b>	<b>18: 72 / 6,625 / 72.4 / 131</b>	
26732 S. Balmoral Woods Dr., Crete • (708) 672-7448 • www.balmoralwoods.com Bill Abrams		
<b>Big Run</b>	<b>18: 72 / 7,028 / 74.4 / 138</b>	
17211 W. 135th St., Lockport • (815) 838-1057 • www.bigrungolf.com Bill Roper		
<b>Bolingbrook</b>	<b>18: 72 / 7,104 / 73.8 / 135</b>	
2001 Rodeo Dr., Bolingbrook • (630) 771-9400 • www.bolingbrookgolfclub.com Eric Aldrich		
<b>Boughton Ridge</b>	<b>9: 32 / 2,205 / 30.1 / 105</b>	
335 E. Boughton Dr., Bolingbrook • (630) 739-4100 • www.bolingbrookparks.org		
<b>Braidwood Fairways</b>	<b>9: 36 / 2,914 / unrated</b>	
35494 Essex Rd. south of Smiley Rd., Wilmington • (815) 458-2965 • no website		
<b>Broken Arrow East / North</b>	<b>18: 72 / 7,034 / 74.5 / 130</b>	
South <b>9: 36 / 3,469 / 37.0 / 140</b>		
16325 W. Broken Arrow Dr., Lockport • (815) 836-8858 • www.golfbrokenarrow.com Michael Chen (GM)		
<b>Cinder Ridge</b>	<b>18: 72 / 6,968 / 73.1 / 139</b>	
24801 Lakepoint Dr., Wilmington • (815) 476-4000 • www.cinderridge.com Sue Krueger (GM)		
<b>Deer Creek</b>	<b>18: 72 / 6,905 / 73.2 / 129</b>	
25055 S. Western Ave., University Park • (708) 672-6667 • www.deercreekgolfcourse.com		
<b>Golf Vista Estates</b>	<b>9: 29 / 1,505 / unrated</b>	
4951 Augusta Blvd., Monee • (708) 534-8204 • www.golfvistagolfclub.com		
<b>Green Garden</b>	<b>Blue 18: 72 / 6,670 / 71.7 / 120</b>	
<b>Gold 18: 72 / 6,713 / 71.8 / 126</b>		
<b>Emerald 9: / 3,181 / 70.8 / 122</b>		
9511 W. Manhattan-Monee Rd., Frankfort • (815) 469-3350 • www.greengardenc.com		
<b>Heritage Bluffs</b>	<b>18: 72 / 7,171 / 74.1 / 138</b>	
24355 W. Bluff Rd., Channahon • (815) 467-7888 • www.heritagebluffs.com Brian Smith		
<b>Inwood</b>	<b>18: 71 / 6,196 / 70.1 / 131</b>	
3200 W. Jefferson St., Joliet • (815) 741-7265 • www.jolietinwoodgc.com Brian Legan		
<b>Lincoln Oaks</b>	<b>18: 71 / 6,186 / 69.0 / 120</b>	
395 E. Richton Rd., Crete • (708) 672-9401 • www.lincolnoaksgolfcourse.com Bob Seymour (GM)		
<b>Links at Carillon</b>	<b>Blue / Red 18: 71 / 6,844 / 70.9 / 124</b>	
<b>White 9: 36 / 3,438 / 36.0 / 61</b>		
21200 S. Carillon Dr., Plainfield • (815) 886-2132 • www.carillongolf.com Jeff Yackley		
<b>Longwood</b>	<b>18: 70 / 6,404 / 70.7 / 130</b>	
3503 E. Steger Rd., Crete • (708) 758-1811 • longwoodcc.com Joe Tintari (GM)		
<b>Mistwood</b>	<b>18: 72 / 6,773 / 72.4 / 137</b>	
1700 W. Renwick Rd., Romeoville • (815) 254-3333 • www.mistwoodgolf.net Andy Mickelson		
<b>Naperbrook</b>	<b>18: 72 / 6,677 / 72.0 / 127</b>	
22204 W. 111th St., Plainfield • (630) 378-4215 • www.naperbrookgolfcourse.org Tim Dunn		
<b>Old Oak</b>	<b>18: 71 / 6,609 / 71.1 / 128</b>	
14200 S. Parker Rd., Homer Glen • (708) 301-3344 • www.oldoakcc.com Dan Shields		
<b>Prairie Bluff</b>	<b>18: 72 / 7,007 / 73.2 / 125</b>	
19433 Renwick Rd., Lockport • (815) 836-4653 • www.prairiebluffgc.com Steve Lunde		
<b>Sanctuary</b>	<b>18: 72 / 6,917 / 72.5 / 131</b>	
485 N. Marley Rd., New Lenox • (815) 462-4653 • www.golfsanctuary.com Bob Schulz		
<b>Square Links</b>	<b>9: 30 / 1,749 / unrated</b>	
7861 W. St. Francis Rd., Frankfort • (815) 469-1600 • www.fspd.org Brian Zipse		

<b>Tamarack</b>	<b>18: 70 / 6,901 / 73.7 / 136</b>	
24032 Royal Worlington Dr., Naperville • (630) 904-4000 • www.tamarackgc.com Brett Hafstad (GM)		
<b>Tuckaway</b>	<b>18: 72 / 6,192 / 69.7 / 117</b>	
27641 Stony Island Ave., Crete • (708) 946-2259 • website inactive Jason Poblocki		
<b>University Park</b>	<b>18: 71 / 6,701 / 71.4 / 123</b>	
23520 Crawford Ave., University Park • (708) 747-0306 • www.universitygolfclub.com Bob Geppert		
<b>Wedgewood</b>	<b>18: 71 / 6,675 / TBA / TBA</b>	<b>Reopening Memorial Day</b>
5001 Caton Farm Rd., Joliet • (815) 741-7270 • www.jolietwedgewoodgc.com Jason Shook		
<b>Willow Run</b>	<b>9: 35 / 2,930 / 33.9 / 113</b>	
12600 W. 187th St., Mokena • (815) 485-2119 • www.willowrungolf.net Rich Wisslead (GM)		
<b>Woodruff</b>	<b>18: 68 / 5,424 / 66.1 / 114</b>	
621 N. Gougar Rd., Joliet • (815) 741-7272 • www.jolietwoodruffgc.com Kirk Blakney (GM)		

## McHENRY COUNTY

<b>Blackstone</b>	<b>18: 72 / 6,734 / 72.8 / 139</b>	
9700 St. Andrews Dr., Marengo • (815) 923-1800 • www.blackstonegc.com Susan Concialdi (GM)		
<b>Boone Creek</b>	<b>18: 71 / 6,435 / 70.4 / 122</b>	
Prairie/Creekside <b>18: 71 / 6,435 / 70.4 / 122</b>		
Valley <b>9: 35 / 2,883 / 33.9 / 115</b>		
6912 Mason Hill Rd., Bull Valley • (815) 455-6900 • www.boonecreekgolfclub.com Tyler Wollberg		
<b>Cary</b>	<b>18: 72 / 6,135 / 69.0 / 119</b>	
2400 Grove Ln., Cary • (847) 639-3161 • www.carycountryclub.com Bob Keith		
<b>Chalet Hills</b>	<b>18: 73 / 6,877 / 73.6 / 137</b>	
943 Rawson Bridge Rd., Cary • (847) 639-0666 • www.chalethillsgolfclub.com Brian Smith		
<b>Chapel Hill</b>	<b>18: 70 / 6,133 / 70.1 / 122</b>	
2500 N. Chapel Hill Rd., McHenry • (815) 385-3337 • www.chapelhillgolf.com Larry Piet (GM)		
<b>Craig Woods</b>	<b>9: 34 / 2,290 / 70.0 / 113</b>	
5815 S. Rt. 47, Woodstock • (815) 338-9781 • www.crystalwoodsgc.com		
<b>Crystal Woods</b>	<b>18: 72 / 6,427 / 70.6 / 128</b>	
5919 S. Rt. 47, Woodstock • (815) 338-3111 • www.crystalwoodsgc.com John Craig		
<b>Foxford Hills</b>	<b>18: 72 / 7,047 / 74.2 / 142</b>	
6800 S. Rawson Bridge Rd., Cary • (847) 639-0400 • www.foxfordhillsgolfclub.com Rob Sankey		
<b>Golf Club of Illinois</b>	<b>18: 71 / 7,011 / 74.4 / 137</b>	
1575 Edgewood Rd., Algonquin • (847) 658-4400 • www.golfclubofill.com Robert Lemke (GM)		
<b>Hunter</b>	<b>18: 72 / 6,381 / 69.2 / 115</b>	
5419 Kenosha St., Richmond • (847) 678-7940 • no website		
<b>Marengo Ridge</b>	<b>18: 72 / 6,654 / 72.5 / 129</b>	
9106 Harmony Hill Rd., Marengo • (815) 923-2332 • www.marengoridgegolfclub.com Bob Witek (GM)		
<b>Oak Grove</b>	<b>18: 71 / 7,021 / 75.0 / 142</b>	
16914 Oak Grove Rd., Harvard • (815) 648-2550 • www.oakgrovegolfcourse.com Tim Miles Jr. (GM)		
<b>Old Top Farm</b>	<b>9: 37 / 2,881 / 30.0 / 113</b>	
2120 Crystal Lake Rd., Crystal Lake • (815) 479-9361 • no website Scott Kerbs		
<b>Pinecrest</b>	<b>18: 72 / 6,604 / 71.5 / 123</b>	
11220 Algonquin Rd., Huntley • (847) 669-3111 • www.huntleyparks.org/parks-facilities/golf/ Mike Yackie		

<b>Pistakee</b> 815 W. Bay Rd., McHenry • (815) 385-9854 • <i>no website</i>	<b>9: 36 / 3,029 / unrated</b> Jason Whitt (GM)
<b>RedTail</b> 7900 Redtail Dr., Lakewood • (815) 477-0055 • <a href="http://www.redtailgolf.com">www.redtailgolf.com</a>	<b>18: 72 / 6,803 / 72.8 / 130</b> Chris Neuhart
<b>Waters Edge</b> 4005 N. Rt. 23, Marengo • (815) 568-5983 • <i>no website</i>	<b>18: 33 / 1,700 / unrated</b> Mark Horan
<b>Whisper Creek</b> 12840 Del Webb Blvd., Huntley • (847) 515-7680 • <a href="http://www.whispercreekgolf.com">www.whispercreekgolf.com</a>	<b>18: 72 / 7,103 / 73.7 / 133</b> Christopher Strand

## KANE COUNTY

<b>Bliss Creek</b> 1 Golfview Rd., Sugar Grove • (630) 466-4177 • <a href="http://www.blisscreekgolf.com">www.blisscreekgolf.com</a>	<b>18: 69 / 5,592 / 67.0 / 115</b> Gordon Pike (GM)
<b>Bonnie Dundee</b> 270 Kennedy Dr., Carpentersville • (847) 426-5511 • <a href="http://www.bonnieundeegc.com">www.bonnieundeegc.com</a>	<b>18: 69 / 6,015 / 68.1 / 112</b> Jim Opp
<b>Bowes Creek</b> 1250 Bowes Creek Blvd., Elgin • (847) 214-5880 • <a href="http://www.bowescreekcc.com">www.bowescreekcc.com</a>	<b>18: 71 / 6,917 / 73.2 / 142</b> Mike Lehman
<b>Deer Valley</b> 46W994 Jericho Rd., Big Rock • (630) 556-3333 • <a href="http://www.deervalleygc.net">www.deervalleygc.net</a>	<b>9: 29 / 1,358 / unrated</b>
<b>Fox Valley</b> 2500 N. River Rd., North Aurora • (630) 879-1030 • <a href="http://www.aurora-il.org/operations">www.aurora-il.org/operations</a>	<b>18: 72 / 5,937 / 68.6 / 126</b> Jeff Schmidt
<b>Highlands of Elgin</b> 875 Sports Way, Elgin • (847) 931-5950 • <a href="http://www.highlandsofelgin.com">www.highlandsofelgin.com</a>	<b>18: 72 / 6,961 / 73.8 / 136</b> Jim Vogt
<b>Hughes Creek</b> 1749 Spring Valley Dr., Elburn • (630) 365-9200 • <a href="http://www.hughescreek.com">www.hughescreek.com</a>	<b>18: 72 / 6,506 / 71.6 / 127</b> Sam Bradberry
<b>Mill Creek</b> 39W525 Herrington Dr., Geneva • (630) 208-7272 • <a href="http://www.millcreekgolfcourse.com">www.millcreekgolfcourse.com</a>	<b>18: 71 / 6,420 / 71.4 / 135</b> Craig Kight
<b>Orchard Valley</b> 2411 W. Illinois Ave., Aurora • (630) 907-0500 • <a href="http://www.orchardvalleygolf.com">www.orchardvalleygolf.com</a>	<b>18: 72 / 6,745 / 72.4 / 134</b> Jim Tourloukis (GM)
<b>Phillips Park</b> 1001 Hill Ave., Aurora • (630) 256-3760 • <a href="http://www.phillipsparkaurora.com">www.phillipsparkaurora.com</a>	<b>18: 71 / 6,186 / 69.8 / 121</b> Jeff Schmidt
<b>Pottawatomie Park</b> 845 N. Second Ave., St. Charles • (630) 584-8356 • <a href="http://www.stcparks.org">www.stcparks.org</a>	<b>9: 35 / 3,007 / 69.8 / 122</b> James Wheeler
<b>Randall Oaks</b> 4101 Binnie Rd., West Dundee • (847) 428-5661 • <a href="http://www.randalloaksgc.com">www.randalloaksgc.com</a>	<b>18: 71 / 6,598 / 71.7 / 133</b> <b>3: 9 / 300 apx.</b> Steve Gillie
<b>Settler's Hill</b> 919 E. Fabyan Pkwy., Batavia • (630) 232-1636 • <a href="http://www.settlershill.com">www.settlershill.com</a>	<b>18: 72 / 6,630 / 72.1 / 130</b> John O'Connor
<b>Tanna Farms</b> 39W808 Hughes Rd., Geneva • (630) 232-4300 • <a href="http://www.tannafarms.com">www.tannafarms.com</a>	<b>18: 71 / 6,510 / 72.0 / 131</b> Chad Zipse
<b>Valley Green</b> 314 Kingswood Dr., North Aurora • (630) 897-3000 • <a href="http://www.valleygreengc.com">www.valleygreengc.com</a>	<b>18: 60 / 3,841 / 70.0 / 113</b>
<b>Wing Park</b> 1000 Wing St., Elgin • (847) 931-5952 • <a href="http://www.cityofelgin.org">www.cityofelgin.org</a>	<b>9: 36 / 3,077 / 70.8 / 115</b> Bill Eubanks
<b>Wolf Run</b> 1700 Jericho Rd., Aurora • (630) 906-1402 • <a href="http://www.wolfrungolfcourse.net">www.wolfrungolfcourse.net</a>	<b>9: 64 / 4,229 / 70.0 / 113</b> Roger Wolf (GM)

## KENDALL COUNTY

<b>Blackberry Oaks</b> 2245 Kennedy Rd., Bristol • (630) 553-7170 • <a href="http://www.blackberryoaks.com">www.blackberryoaks.com</a>	<b>18: 72 / 6,404 / 71.3 / 134</b>
<b>Cedardell</b> 14264 S. Hale St., Plano • (630) 552-3242 • <a href="http://www.cedardellgolfclub.com">www.cedardellgolfclub.com</a>	<b>9: 35 / 3,029 / 69.4 / 127</b> Terry Donahue
<b>Fox Bend</b> 3516 U.S. Hwy 34, Oswego • (630) 554-3939 • <a href="http://www.foxbendgolfcourse.com">www.foxbendgolfcourse.com</a>	<b>18: 72 / 6,890 / 73.1 / 130</b> Brad Doyle (GM)
<b>Whitetail Ridge</b> 7671 Clubhouse Dr., Yorkville • (630) 882-8988 • <a href="http://www.whitetailridge.us">www.whitetailridge.us</a>	<b>18: 71 / 6,524 / 71.0 / 128</b> Patrick MacDonald

## KANKAKEE COUNTY

<b>Aspen Ridge</b> 1763 E. 4000 N Rd., Bourbonnais • (815) 939-1742 • <a href="http://www.aspenridgegolf.com">www.aspenridgegolf.com</a>	<b>18: 70 / 6,191 / 69.6 / 119</b> Leo Ciaccio (GM)
<b>Cardinal Creek</b> Center / South North	<b>18: 72 / 6,423 / 70.0 / 122</b> <b>9: 36 / 3,274 / 35.1 / 122</b> 615 S. Dixie Hwy., Beecher • (708) 946-2800 • <a href="http://www.cardinalcreekgolfclub.com">www.cardinalcreekgolfclub.com</a>
<b>High Point</b> 309 High Point Dr., Essex • (815) 365-4000 • <a href="http://www.golfhighpoint.com">www.golfhighpoint.com</a>	<b>9: 27 / 3,263 / 70.8 / 116</b> Debra Deegan
<b>Kankakee Elks</b> 2283 Bittersweet Dr., Aroma Park • (815) 937-9547 • <a href="http://www.elksgolf627.com">www.elksgolf627.com</a>	<b>18: 71 / 6,430 / 71.1 / 120</b> Kyle Morris
<b>Manteno</b> 7202 N. 4000 E Rd., Manteno • (815) 468-8827 • <a href="http://www.mantenogolf.com">www.mantenogolf.com</a>	<b>18: 72 / 6,462 / 70.8 / 120</b> C.J. Wade (GM)
<b>Minne Monesse</b> 15944 E. Six Mile Grove Rd., Grant Park • (815) 465-6653 • <a href="http://www.minnemonesse.com">www.minnemonesse.com</a>	<b>18: 72 / 6,357 / 70.7 / 126</b> Debra Hurley
<b>Oak Springs</b> 6740 E. 3500 S Rd., St. Anne • (815) 937-1648 • <a href="http://www.oakspringsgolf.com">www.oakspringsgolf.com</a>	<b>18: 72 / 6,260 / 70.0 / 122</b> Sam Ortman (GM)
<b>Shamrock</b> 6575-B E. Rt. 17, Aroma Park • (815) 937-9355 • <a href="http://www.golfshamrock.com">www.golfshamrock.com</a>	<b>18: 60 / 3,357 / 65.0 / 107</b> Gene Smith
<b>South Shore</b> 1727 N. River South Rd., Momence • (815) 472-4407 • <i>website inactive</i>	<b>18: 72 / 6,200 / 68.9 / 122</b>

## LAKE COUNTY / INDIANA

<b>Cedar Creek</b> 10483 W. 109th Ave., Cedar Lake • (219) 365-2902 • <a href="http://www.lakecountyparks.com">www.lakecountyparks.com</a>	<b>9: 31 / 1,741 / 66.5 / 104</b> Tom Zimmerman
<b>Centennial Park</b> 1005 S. Centennial Dr., Munster • (219) 836-6931 • <a href="http://www.munster.org">www.munster.org</a>	<b>9: 36 / 3,300 / 72.4 / 132</b> Matt Meneghetti
<b>Indian Ridge</b> 6363 Grand Blvd., Hobart • (219) 942-6850 • <a href="http://www.hegangolf.com">www.hegangolf.com</a>	<b>18: 72 / 6,217 / 69.1 / 110</b> Chuck Hegan (GM)
<b>Lost Marsh</b> 1001 E. 129th St., Hammond • (219) 932-4046 • <a href="http://www.lostmarshgolf.com">www.lostmarshgolf.com</a>	<b>18: 72 / 6,872 / 72.0 / 128</b> <b>9: 27 / 2,600 / unrated</b> Niko Sullivan
<b>MacArthur</b> 4000 Indianapolis Blvd. (at 140th St.), East Chicago • (219) 391-8362 • <i>no website</i>	<b>9: 27 / 1,390 / unrated</b>

<b>Oak Knoll</b> 11200 Whitcomb St., Crown Point • (219) 663-3349 • <a href="http://www.hegangolf.com">www.hegangolf.com</a>	<b>18: 70 / 5,703 / 67.3 / 107</b> Dave Steuer (GM)
<b>Palmira</b> 12111 W. 109th St., St. John • (219) 365-4331 • <a href="http://www.palmiragolf.com">www.palmiragolf.com</a>	<b>18: 72 / 6,921 / 72.7 / 122</b> Rich Nicpon (GM)
<b>Pheasant Valley</b> 3838 W. 141st Ave., Crown Point • (219) 663-5000 • <a href="http://www.hegangolf.com">www.hegangolf.com</a>	<b>18: 72 / 6,869 / 72.3 / 126</b> Pat Hedge
<b>River Pointe</b> 6700 Country Club Rd., Hobart • (219) 942-2747 • <a href="http://www.whitehawkcountryclub.com/river-pointe">www.whitehawkcountryclub.com/river-pointe</a>	<b>Pointe 9: 36 / 3,256</b> <b>Pines 9: 36 / 3,167</b> <b>Ponds 9: 36 / 3,299</b>
<b>Scherwood</b> 600 E. Joliet St., Schererville • (219) 865-2554 • <a href="http://www.scherwood.com">www.scherwood.com</a>	<b>18: 71 / 6,849 / 73.4 / 125</b> <b>9: 30 / 1,463 / unrated</b> Marv Hanson
<b>South Gleason Park</b> 3400 Jefferson St., Gary • (219) 980-1089 • <a href="http://www.gary.in.us/parks/golf.asp">www.gary.in.us/parks/golf.asp</a>	<b>18: 71 / 6,312 / 68.5 / 108</b> Nymrod Adkins
<b>South Shore</b> 14400 Lake Shore Dr., Cedar Lake • (219) 374-6070 • <a href="http://www.golfssc.com/">www.golfssc.com/</a>	<b>18: 70 / 5,466 / 67.0 / 118</b> Dennis Scaggs
<b>Summertree</b> 2323 E. 101st Ave., Crown Point • (219) 663-0800 • <a href="http://www.hegangolf.com">www.hegangolf.com</a>	<b>18: 72 / 6,596 / 71.9 / 124</b>
<b>Turkey Creek</b> 6400 Harrison St., Merrillville • (219) 980-5170 • <a href="http://www.turkeycreekgolf.com">www.turkeycreekgolf.com</a>	<b>18: 70 / 6,202 / 69.3 / 118</b> Chris Ciocoriano
<b>White Hawk</b> 1001 White Hawk Dr., Crown Point • (219) 661-2323 • <a href="http://www.whitehawkcountryclub.com">www.whitehawkcountryclub.com</a>	<b>Grey / Black 18: 72 / 7,011 / 73.9 / 141</b> <b>Red / Silver 18: 72 / 7,201 / 75.1 / 139</b> Drew Brining
<b>Wicker Memorial Park</b> 8554 Indianapolis Blvd., Highland • (219) 838-9809 • <a href="http://www.wickermemorialpark.com">www.wickermemorialpark.com</a>	<b>18: 72 / 6,887 / 72.6 / 122</b> Bill Springer

## ILLINOIS OUTLYING NORTHWEST GALENA TO ROCKFORD / DEKALB

<b>Aldeen</b> 1900 Reid Farm Rd., Rockford • (815) 282-4653 • <a href="http://www.aldeengolfclub.com">www.aldeengolfclub.com</a>	<b>18: 72 / 7,131 / 74.7 / 139</b> Dennis Geddes	<b>Winnebago</b>
<b>Alpine Hills</b> 4402 Larson Ave., Rockford • (815) 966-8737 • <a href="http://rockfordparkdistrict.org/alpinehills">http://rockfordparkdistrict.org/alpinehills</a>	<b>5: remodeled for junior golf</b>	<b>Winnebago</b>
<b>Apple Canyon Lake</b> 14A200 Canyon Club Dr., Apple River • (815) 492-2477	<b>9: 36 / 3,280 / 70.1 / 110</b> <a href="http://www.applecanyonlake.org/amenities/golf.php">http://www.applecanyonlake.org/amenities/golf.php</a>	<b>Jo Daviess</b>
<b>Atwood Homestead</b> 8990 Old River Rd., Rockford • (815) 623-2411 • <a href="http://www.winnebago-county-golf.com">www.winnebago-county-golf.com</a>	<b>18: 72 / 7,431 / 74.7 / 127</b>	<b>Winnebago</b>
<b>Beaver Creek</b> 19619 Leroy Center Rd., Capron • (815) 569-2427 • <a href="http://www.beavercreekgolf.com/">http://www.beavercreekgolf.com/</a>	<b>9: 35 / 3,033 / unrated</b>	<b>Boone</b>
<b>Blackhawk Run</b> 3501 S Golf Rd., Stockton • (815) 947-3011 <a href="http://www.galena.org/places/black-hawk-run-golf-course/">http://www.galena.org/places/black-hawk-run-golf-course/</a>	<b>18: 72 / 6,378 / 72.0 / 127</b>	<b>Jo Daviess</b>
<b>Brush Creek</b> 2001 W Saint James Rd., Orangeville • (815) 789-4042 • <a href="http://www.brushcreekgolf.com/">http://www.brushcreekgolf.com/</a>	<b>9: 36 / 3,218 / unrated</b>	<b>Stephenson</b>

**Buena Vista** 9: 32 / 2,477 / 31.3 / 53 DeKalb  
131 Buena Vista Dr., DeKalb • (815) 758-4812 • www.dekalbparkdistrict.com Russ Robinson

**Chicago Golf & Tiki Tees** 9: 34 / 2,690 / unrated DeKalb  
210 S. Pointe Ct, DeKalb • (815) 517-1449 • http://chicagogolfandtikitees.com/

**Cross Creek** 9: 36 / 2,958 / 33.5 / 103 Whiteside  
15523 Henry Rd., Morrison • (815) 772-7966 • http://www.crosscreekgolfandestates.com/

**Deer Valley** Deer Valley 18: 71 / 6,415 / 70.7 / 124 Whiteside  
Par 3 9: 27 / 715 / unrated  
3298 Hoover Rd., Deer Grove • (815) 438-4653 • www.dvforegolf.com Chris Sandell

**Eagle Ridge Resort & Spa** Jo Daviess  
General 18: 72 / 6,820 / 73.2 / 142  
North 18: 72 / 6,836 / 73.2 / 134  
South 18: 72 / 6,862 / 73.7 / 140  
East 9: 34 / 2,648 / 66.0 / 117  
Hwy. 20 at Galena Territory, Galena • (815) 777-5000 • www.eagleridge.com Ikhlas Ahmed

**Elliot** 18: 72 / 6,433 / 70.3 / 120 Winnebago  
888 S. Lyford Rd., Rockford • (815) 332-5130 • www.rockfordparks.org David Claeysens

**Emerald Hill** 18: 72 / 6,318 / 70.3 / 121 Whiteside  
16802 Prairieville Rd., Sterling • (815) 622-6204 • www.emeraldhillgolf.com Kristen Wegmann (GM)

**Fairways** 18: 66 / 4,649 / 64.4 / 104 Ogle  
555 S. Seventh St., Rochelle • (815) 562-6666 • www.rochellecountryclub.com Randy Mershon

**Galena** 18: 71 / 6,571 / 71.5 / 116 Jo Daviess  
11557 W US Highway 20, Galena • (815) 777-3599 • http://galenagolf.webs.com

**Ingersoll** 18: 71 / 6,107 / 68.9 / 111 Winnebago  
Youth 4: par up to player  
101 Daisyfield Dr., Rockford • (815) 987-8834 • www.rockfordparks.org Nancy Joan Kauzlarich

**Lacoma** Blue 18: 71 / 6,814 / 72.7 / 123 Jo Daviess  
Red / Gold 18: 71 / 5,663 / 68.0 / 114  
Par 3 9: 27 / 1,000 / unrated  
8080 Timmerman Dr., East Dubuque • (815) 747-3874 • http://lacomagolf.com/

**Lake Carroll** 18: 72 / 6,418 / 71.6 / 130 Carroll  
2911 Ironwood Dr., Lanark • (815) 493-2808 • www.visitlakecarroll.com

**Lake Erie** 9: 36 / 3,069 / 34.4 / 108 Whiteside  
900 Lakeside Dr., Erie • (309) 659-2250 • www.lakeeriecountryclub.com

**Ledges** 18: 72 / 6,740 / 72.5 / 129 Winnebago  
7111 McCurry Rd., Roscoe • (815) 389-0979 • www.winnebagocountygolf.com Steven Hare

**Lost Nation** 18: 71 / 6,222 / 69.5 / 114 Lee  
6931 S. Lost Nation Rd., Dixon • (815) 652-4212 • www.lostnationgolf.com Brian Goad

**Macktown** 18: 71 / 5,756 / 67.9 / 112 Winnebago  
2221 Freepoint Rd., Rockton • (815) 624-7410 • www.winnebagocountygolf.com

**Newburg Village** 9: 36 / 3,134 / 70.0 / 121 Winnebago  
253 Club House Dr., Cherry Valley • (815) 332-9002 • www.newburgvillage.net/

**Palisades** 9: 33 / 2,369 / 62.2 / NA Carroll  
18280 Ill. Rt. 84, Savanna • (815) 273-2141 • http://palisadesgolfcourse.com/

**Park Hills** East 18: 72 / 6,477 / 69.9 / 116 Stephenson  
West 18: 72 / 6,627 / 71.3 / 121  
3240 W Stephenson St., Freeport • (815) 235-3611 • www.parkhillsgolfcourse.com

**Timber Pointe** 18: 72 / 7,077 / 73.8 / 125 Boone  
5750 Woodstock Rd., Poplar Grove • (815) 544-1935 • www.golfthepointe.com Randy Schairer

**Prairie Pines** 9: 34 / 2,465 / 28.0 / 113 DeKalb  
6236 State Rd. 38, DeKalb • (815) 758-5249 • www.prairiepinesgolf.com

**PrairieView** 18: 72 / 7,135 / 73.5 / 133 Ogle  
7993 N. River Rd., Byron • (815) 234-4653 • www.prairieviewgolf.com

**Prophet Hills** 9: 35 / 3,040 / 67.6 / 106 Whiteside  
4319 Bishop Rd., Prophetstown • (815) 537-5226 • www.prophethills.com Jodi Farral (GM)

**Red Barn** 9: 32 / 2,120 / 28.0 / 113 Winnebago  
12379 Wagon Wheel Rd., Rockton • (815) 624-8037 • www.redbarngolfcourse.com

**River Heights** 18: 72 / 6,528 / 70.8 / 126 DeKalb  
1100 S. Annie Glidden Rd., DeKalb • (815) 758-1550 • www.riverheightsgc.com Roger Huber

**Rock River Golf & Pool** 18: 70 / 5,920 / 69.2 / 123 Whiteside  
3901 Dixon Ave., Rock Falls • (815) 625-2322 • www.rockriversupperclub.com/golf

**Sandburr Run** 9: 36 / 3,047 / unrated Carroll  
5020 Illinois Rt. 84, Thomson • (815) 902-6063 • website inactive

**Sandy Hollow** 18: 71 / 6,228 / 69.3 / 115 Winnebago  
2500 Sandy Hollow Rd., Rockford • (815) 987-8836  
www.rockfordparkdistrict.org/sandy-hollow Nancy Joan Kauzlarich

**Savannah Oaks of Candlewick Lake** Boone  
9: 35 / 2,925 / NA  
100 Savannah Ridge Dr., Poplar Grove • (815) 765-0111 • http://candlewicklake.org/

**Sinnissippi** 9: 37 / 3,230 / 35.5 / 130 Winnebago  
1401 N. Second St., Rockford • (815) 987-8838 • www.rockfordparks.org

**Stagecoach** 9: 35 / 2,653 / 34.3 / 110 Stephenson  
621 W Lena St., Lena • (815) 369-2222 • no website

**Storybrook** 18: 72 / 6,194 / 69.6 / 118 Jo Daviess  
2124 W Storybrook Rd., Hanover • (815) 591-2210 • http://storybrook.com/ Mike Dascher (GM)

**Shady Oaks** 18: 71 / 6,212 / 69.6 / 123 Lee  
577 U.S. Hwy. 52, Sublette • (815) 849-5424 • www.shadyoaksgc.com

**Sunset** 9: 36 / 3,169 / 69.5 / 115 Ogle  
216 Sunset Hill, Mount Morris • (815) 734-4839 • www.sunsetgolfmm.com

**Swan Hills** 18: 71 / 6,359 / 71.0 / 113 Winnebago  
2600 Gustafson Rd., Belvidere • (815) 547-3232 • no website Catherine Beaves

**Sycamore** 18: 71 / 5,993 / 68.0 / 114 DeKalb  
940 E. State St., Sycamore • (815) 895-3884 • www.sycamoreparkdistrict.com Kirk Lundbeck

**Timber Creek** 18: 71 / 6,504 / 71.6 / 126 Lee  
729 Timber Creek Rd., Dixon • (815) 288-5110 • www.timbercreekdixon.com

**Westlake Village** 18: 71 / 6,881 / 70.0 / 113 Winnebago  
3820 Westlake Village Dr., Winnebago • (815) 335-7177 • http://golfwestlake.com/

**Woodbine Bend** 18: 72 / 6,563 / 71.8 / 124 Jo Daviess  
3500 E Center Rd., Stockton • (815) 858-3939 • www.woodbinebend.com

**Wolf Hollow / Lena** 18: 71 / 6,408 / 70.9 / 122 Stephenson  
6546 N. Shippee Rd., Lena • (815) 369-5513 • www.wolfhollowgolf.net

## QUAD CITIES ROCK ISLAND TO MONMOUTH

**Baker Park** 18: 71 / 6,170 / 68.7 / 112 Henry  
1095 Cambridge Rd., Kewanee • (309) 852-2872 • http://kewanee-parkdistrict.org/golf/

**Bunker Links** 18: 71 / 6,036 / 68.7 / 116 Knox  
3500 Lincoln Park Dr., Galesburg • (309) 344-1818  
www.ci.galesburg.il.us/services/bunker\_links\_golf/

**Byron Hills** 18: 71 / 6,465 / 70.5 / 115 Rock Island  
23316 94th Ave. N, Port Byron • (309) 523-2664 • www.byronhills.com

**Champion at Hillcrest Resort** Henry  
9: 30 / 1,848 / unrated  
16260 E. 350th St., Orion • (309) 755-6550 • http://hillcresteventcenter.com

**Country View** 9: 35 / 2,865 / unrated Henry  
8492 N. 2300th Ave., Geneseo • (309) 441-5272 • https://countryviewgolfcourse.net

**Fyre Lake** 18: 70 / 6,505 / 72.1 / 130 Mercer  
1402 Lakeview Ct., Sherrard • (309) 644-4575 • www.fyrelakegolf.com

**Gibson Woods** 18: 71 / 6,362 / 70.9 / 119 Knox  
Monmouth Park, Monmouth • (309) 734-9968 • www.gibsonwoods.com

**Golfmohr** 18: 72 / 6,855 / 71.4 / 124 Rock Island  
16724 Hubbard Rd., East Moline • (309) 496-2434 • www.golfmohr.com

**Highland Springs** 18: 72 / 6,777 / 70.2 / 129 Rock Island  
9500 35th St. W, Rock Island • (309) 732-7265 • www.rigov.org Todd Winter (GM)

**Indian Bluff** 18: 70 / 5,700 / 67.6 / 113 Rock Island  
6200 78th Ave., Milan • (309) 799-3868 • www.indianbluffgolfcourse.com

**Kewanee Dunes** 18: 72 / 6,832 / 72.4 / 130 Henry  
3536 Midland Rd., Kewanee • (309) 852-4508 • www.kewaneedunes.com Colby Horsley (GM)

**Laurel Greens** Laurel 1 9: 36 / 2,897 Knox  
Laurel 2 9: 36 / 3,159  
courses played Laurel 3 9: 36 / 3,238  
in combination Laurel 4 9: 36 / 3,095  
1133 E. US Hwy. 150, Knoxville • (309) 289-4146 • http://laurelgreens.wix.com/laurel-greens

**Maple Bluff** 18: 72 / 6,569 / 71.1 / 121 Henry  
E. 1600 St., Geneseo • (309) 944-5418 • www.golfmaplebluffgeneseo.com Dennis Peck (GM)

**Oak Run** 18: 71 / 6,417 / 68.5 / 115 Knox  
1468 Knox Rd., 1725 N., Dahinda • (309) 879-2582 • www.oakrunpublicgolfcourse.com

**Saukie Municipal** 18: 66 / 5,152 / 63.4 / 92 Rock Island  
3101 38th St., Rock Island • (309) 732-2278 • http://rigov.org/294/Saukie-Golf-Course

**TPC at Deere Run** 18: 71 / 7,258 / 75.8 / 144 Rock Island  
3100 Heather Knoll, Silvis • (309) 796-6000 • www.tpc.com/tpc-deere-run Brian DeJohn

## NORTH CENTRAL LASALLE-PERU TO BLOOMINGTON

**Anderson Fields** 9: 35 / 2,688 / unrated LaSalle  
1901 N. Bloomington St., Streator • (815) 672-3702 • www.ci.streator.il.us/anderson-fields.php

**Blue Grass Creek** 18: 36 / 3,048 / 35.0 / 113 Tazewell  
10521 Boston School Rd., Minier • (309) 392-2094 • no website

**The Bourne** 18: 72 / 6,355 / 70.0 / 123 LaSalle  
2359 N. 35th Rd., Norway • (815) 496-2301 • no website Deb Rollo

**Coyote Creek** 18: 72 / 6,701 / 72.3 / 135 Peoria  
8201 W. Lancaster Rd., Bartonville • (309) 633-0911 • http://golfcoyotecreek.com/

**Dayton Ridge** 18: 36 / 3,050 / 35.1 / 116 LaSalle  
3076 E. 18th Rd., Ottawa • (815) 434-0145 • no website



**The Den at Fox Creek** 18: 72 / 6,926 / 73.3 / 134  
3002 Fox Creek Rd., Bloomington • (309) 434-2300 • www.thedengc.com **McLean**  
Jason Wingate

**Detweiler Park** 9: 29 / 1,758 / 55.1 / unsloped **Peoria**  
8412 N. Galena Rd., Peoria • (309) 692-7518 • www.ppdgolf.org/detweiler

**Dwight** 18: 72 / 6,306 / unrated **Livingston**  
31577 N 2400 E Rd, Dwight • (815) 584-9825 • www.dwightcountryclub.com

**Earlville** 9: 32 / 2,442 / 35.5 / 114 **LaSalle**  
400 Oak St., Earlville • (815) 246-9329 • no website

**Eastwood** 9: 36 / 3,132 / 35.0 / 120 **LaSalle**  
2000 Eastwood Ave., Streator • (815) 673-5553 • www.eastwoodtwincreeks.com/eastwood

**Edgebrook** 18: 72 / 6,294 / 70.9 / 126 **DeKalb**  
Suydam Rd., Sandwich • (815) 786-3058 • www.sandwichgolf.com Clyde Henning

**Edgewood Park** 18: 72 / 6,621 / 70.9 / 117 **Putnam**  
RR 89, McNabb • (815) 882-2317 • www.edgewoodparkgolfclub.com Ray DeFrank (GM)

**El Paso** 18: 71 / 6,111 / 69.6 / 125 **Woodford**  
2860 County Rd. 600 N., Kappa • (309) 527-5225 • www.elpasogolfclub.com

**Fairlakes** 18: 67 / 5,207 / 66.4 / 102 **Woodford**  
2203 County Rd. 600 N., (S. of) Seor • (309) 744-2222 • http://fairlakesgc.weebly.com

**Fon du Lac** 9: 27 / 1,255 / 28.0 / 110 **Tazewell**  
123 Par 3 Ln., East Peoria • (309) 699-3923  
www.fondulacpark.com/facilities/fondulac-golf-course

**Four Willows** 9: 35 / 2,911 / unrated **Mason**  
34323 E. 1000 N., Mason City • (217) 482-3349 • no website

**Green River** 9: 34 / 2,743 / unrated **Bureau**  
15212 Illinois Highway 92, Walnut • (815) 379-2227 • no website

**Hazy Hills** 9: 35 / 2,900 / unrated **McLean**  
25258 N. 1350 East Rd., Hudson • (309) 726-9600 • www.hazyhillsgolf.com

**Hidden Lake** 18: 70 / 5,735 / 67.1 / 115  
12985 350 East St., Sheffield • (815) 454-2660 • www.hiddenlakegolfclub.com Pete Macnaughton

**Highland Park** 18: 70 / 5,597 / 66.8 / 116 **McLean**  
1613 S. Main St., Bloomington • (309) 434-2200  
http://4.17.232.139/parks/golf-courses/Highland-Park/general-info.htm

**Hillcrest** 18: 59 / 3,095 / unrated **Tazewell**  
1829 Washington Rd., Washington • (309) 444-9033 • http://hillcrestgolfcenter.com

**Hunter's Ridge** 18: 72 / 6,337 / 70.5 / 125 **Bureau**  
12927 Ill. Hwy. 26, Princeton • (815) 879-6531 • www.huntersridgegc.com Wanda Nelson

**Indian Creek** 9: 36 / 2,920 / 34.6 / 116 **Livingston**  
7429 N. 2200 E. Rd., Fairbury • (815) 692-2655 • http://indiancreekcc.net

**Indian Hills** 18: 35 / 2,846 / 33.3 / 105 **Bureau**  
9468 1725 E. St., Tiskilwa • (815) 646-4856 • no website

**Indian Oaks** 9: 36 / 3,345 / 71.8 / 118 **DeKalb**  
603 E. Preserve Rd., Shabbona • (815) 824-2282 • www.indianoakscountryclub.com

**Indian Springs** 9: 36 / 3,180 / 71.8 / 119 **McLean**  
36846 Comanche Dr., Saybrook • (309) 475-4111 • www.golfatindiansprings.net (inactive)

**Ironwood** 18: 72 / 6,990 / 72.5 / 122 **McLean**  
1901 N. Towanda Ave., Normal • (309) 454-9620 • www.golfironwood.org

**Kaufman Park** 9: 34 / 2,725 / 66.2 / 113 **Woodford**  
800 W. Center St., Eureka • (309) 467-2523 • http://kaufmanpark.com/

**Kellogg** **Kellogg** 18: 72 / 6,755 / 71.9 / 129 **Peoria**  
**Executive** 9: 34 / 2,901 / 33.7 / 114  
7716 N. Radnor Rd., Peoria • (309) 691-0293 • http://www.ppdgolf.org/kellogg/

**Lacon** 9: 35 / 2,970 / 68.0 / 110 **Marshall**  
1400 State Rt. 17, Lacon • (309) 246-7650  
www.facebook.com/Lacon-Country-Club-883831921643806/

**Lakewood** 9: 36 / 3,365 / 35.7 / 119 **Mason**  
Rt. 78, Bath • (309) 546-2274 • www.facebook.com/lakewoodgolfclub4

**LeRoy** 9: 36 / 3,000 / 33.4 / 105 **McLean**  
27307 Rt. 150, LeRoy • (309) 962-3421 • website inactive

**Lick Creek** 18: 72 / 6,910 / 73.5 / 137 **Tazewell**  
2210 N. Parkway Dr., Pekin • (309) 346-0077 • www.pekinparkdistrict.org

**Links At Ireland Grove** 9: 29 / 1,575 / unrated **McLean**  
3807 Ballyunion Rd., Bloomington • (309) 661-8040 • www.thelinksatirelandgrove.com/

**Madison Park** 18: 69 / 5,476 / 64.5 / 96 **Peoria**  
2735 Dr. Martin Luther King Jr. Dr., Peoria • (309) 673-7161 • www.ppdgolf.org/madison/

**Mendota** 18: 70 / 6,186 / 69.5 / 117 **LaSalle**  
35666 Rt. 34 W., Mendota • (815) 538-7241 • www.mendotagolfclub.com/

**Metamora Fields** 18: 71 / 7,023 / 74.1 / 130 **Woodford**  
801 Progress St., Metamora • (309) 367-4000 • www.metamorafields.com Jeff Roche

**Nettle Creek** 18: 71 / 6,562 / 72.1 / 130 **Grundy**  
5355 N. Saratoga Rd., Morris • (815) 941-4300 • www.nettlecreek.com Kurt Nolen

**Newman** 18: 71 / 6,908 / 72.9 / 132 **Peoria**  
2021 W. Nebraska Ave., Peoria • (309) 674-1663 • www.ppdgolf.org/newman/

**Parkview** 18: 70 / 6,002 / 65.4 / 102 **Tazewell**  
2300 Broadway St., Pekin • (309) 346-8494 • www.parkviewgolfcourseil.com/

**Pine Hills** 9: 35 / 3,203 / 72.0 / 122 **LaSalle**  
1667 N. 2501st Rd., Ottawa • (815) 434-3985 • www.ottawapinehillsgolfclub.com

**Pine Lakes** 18: 71 / 6,385 / 70.3 / 122 **Tazewell**  
RR 2, Washington • (309) 745-9344 • www.golfpinelakesgc.com

**Pontiac Elks** 18: 72 / 6,804 / 73.0 / 132 **Livingston**  
Rt. 116 W at Elks Club Rd. (east of I-55), Pontiac • (815) 842-1249 • www.pontiacelks.com

**Prairie Lake** 9: 37 / 3,218 / 35.4 / 114 **LaSalle**  
2550 N 32nd Rd., Marseilles • (815) 795-5107 • no website

**Prairie Vista** 18: 72 / 6,745 / 72.2 / 129 **McLean**  
502 W. Hamilton Rd., Bloomington • (309) 434-2217  
http://4.17.232.139/parks/golf-courses/Prairie-Vista/general-info.htm

**Quail Meadows** 18: 72 / 6,916 / 72.9 / 124 **Tazewell**  
2215 Centennial Dr., Washington • (309) 694-3139 • www.quailmeadowsgolf.com

**Senica's Deer Park** 18: 71 / 6,378 / 70.6 / 120 **LaSalle**  
100 Deer Park Ln., Oglesby • (815) 667-4239 • no website Jesse Cavanaugh

**Senica's Oak Ridge** 18: 72 / 6,830 / 72.1 / 131 **LaSalle**  
658 U.S. Hwy. 6, LaSalle • (815) 223-7273 • www.senicasoakridge.net Jesse Cavanaugh

**Shagbark** 9: 36 / 2,867 / 32.5 / unsloped **Iroquis**  
1262 N 640 E Rd, Onarga • (815) 268-7308 • www.shagbarkgolf.com

**Silver Ridge** 18: 72 / 7,005 / 73.5 / 130 **Ogle**  
3069 N. Hill Rd., Oregon • (815) 734-4440 • no website Jason Wombacher

**South Bluff** 9: 36 / 2,851 / 33.2 / 106 **LaSalle**  
229 N. 2550th Rd., Peru • (815) 223-0603 • www.southbluff.net

**Spring Creek** 18: 72 / 6,225 / 71.9 / 125 **Bureau**  
286 Spring Creek Dr., Spring Valley • (815) 894-2137 • www.springcreek-golfcourse.com

**Sunset Hills** 18: 71 / 6,649 / 71.9 / 129 **Tazewell**  
1620 Summit Dr., Pekin • (309) 347-7553 • www.mashiesp.com

**Swan Creek** 18: 72 / 6,814 / 72.7 / 127 **Fulton**  
1189 Golf Course Rd., Avon • (309) 465-3127 • www.swancreekgolfclub.com

**Twin Creeks** 9: 36 / 3,036 / 69.7 / unsloped **Livingston**  
30396 N. 700 E. Rd., Manville • (815) 642-4220 • www.eastwoodtwincreeks.com/twin-creeks

**Wyaton Hills** 9: 36 / 3,071 / 66.8 / 117 **Bureau**  
17879 1500 North Ave., Princeton • (815) 872-2641 • no website Max Hallberg Jr.

**WeaverRidge** 18: 72 / 7,030 / 73.1 / 136 **Peoria**  
5100 WeaverRidge Blvd., Peoria • (309) 691-3344 • www.weaverridge.com Clay Stevens

**Weibring at Illinois State** 18: 72 / 6,915 / 72.7 / 131 **McLean**  
800 Gregory St., Normal • (309) 438-8065 • www.isugolf.com Laura Provost

**Wolf Creek** 18: 72 / 6,637 / 69.1 / 117 **Livingston**  
21062 N 1850 East Rd., Cayuga • (815) 842-9008 • www.golfatwolfcreek.com

## WEST CENTRAL QUINCY TO JACKSONVILLE

**Arrowhead Heights** 18: 72 / 6,420 / 70.7 / 125 **Adams**  
1403 S. Main St., Camp Point • (217) 593-6619 • http://arrowheadheights.com

**Bow Lake** 18: 35 / 2,820 / 33.3 / 106 **Pike**  
1500 William R. Croxville Dr., Barry • (217) 335-7043 • www.bowlakegolf.com

**Carthage** 9: 35 / 2,805 / 33.5 / unsloped **Hancock**  
1561 N. County Rd. 1830, Carthage • (217) 357-3625 • www.carthagegolfclub.com

**Cedar Crest** 9: 36 / 3,054 / 67.6 / 111 **Adams**  
3312 N. 36th St., Quincy • (217) 223-1210 • www.cedarcrestquincy.com

**Deer Run** 18: 72 / 6,073 / 69.7 / 120 **Hancock**  
1 Deer Run Dr., Hamilton • (217) 847-3623  
www.facebook.com/pages/Deer-Run-Golf-Course/113877965310098

**Gold Hills** 18: 70 / 6,540 / 69.9 / 115 **McDonough**  
10980 E. 900th St., Colchester • (309) 837-2930 • www.gold-hills.com/main\_menu.htm

**Knights of Columbus Par 3** 9: 27 / 897 / unrated **Adams**  
700 S. 36th St., Quincy • (217) 222-4105 • http://www.quincykofc.org/sportsmenu/11-golf

**Lamoine Valley** 9: 27 / 2,568 / unrated **Hancock**  
W. Archer at N. E St., La Harpe • (217) 659-3918 • no website

**Links at Jacksonville** 18: 72 / 6,836 / 72.1 / 122 **Morgan**  
**Executive** 9: 27 / 2,463 / unrated  
319 Holkenbrink Dr., Jacksonville • (217) 479-4663 • www.linksofjacksonville.com

**Mussatto at W. Illinois** 18: 72 / 6,862 / 73.6 / 136 **McDonough**  
1215 Tower Rd., Macomb • (309) 298-3676 • www.wiu.edu/student\_services/golf\_course/

**Northridge Hills** 9: 32 / 2,316 / 31.2 / 104 **Morgan**  
1265 Sandusky Rd., Jacksonville • (217) 243-4241 • www.northridgehills.com (inactive)

**Plum Creek** 9: 36 / 3,150 / 34.9 / 114 **Scott**  
1135 Golf Course Rd., Winchester • (217) 742-9018 • no website

<b>Rolling Greens</b> Rt 99 N., Mount Sterling • (217) 773-3085 • www.rollinggreensbc.com	<b>18: 72 / 6,715 / unrated</b>	<b>Brown</b>
<b>Scripps Park</b> RR 2, Rushville • (217) 322-4444 • no website	<b>18: 70 / 5,660 / 66.7 / 107</b>	<b>Schuyler</b>
<b>Shaw Creek</b> 300 1/2 Miller St., Bushnell • (309) 772-3422 • no website	<b>9: 36 / 2,917 / unrated</b>	<b>McDonough</b>
<b>Tri County</b> Off Hwy. 61, Augusta • (309) 458-3226 www.facebook.com/Tri-County-Golf-Course-85700863251/	<b>9: 34 / 2,637 / unrated</b>	<b>Hancock</b>
<b>Twin Oaks</b> 800 W. Adams St., Blandinsville • (309) 652-9519 • no website	<b>9: 35 / 3,004 / unrated</b>	<b>McDonough</b>
<b>Westview</b> 2150 S. 36th St., Quincy • (217) 223-7499 • www.westviewgolf.com	<b>Glasgow 18: 71 / 6,400 / 69.7 / 117</b> <b>Course 2 9: 35 / 3,057 / 68.8 / 112</b>	<b>Adams</b> David Morgan

## MID CENTRAL SPRINGFIELD TO DANVILLE

<b>Bent Tree</b> 14618 E. County Rd. 400 N., Charleston • (217) 348-1611 • no website	<b>18: 70 / 6,240 / unrated</b>	<b>Coles</b>
<b>Bergen</b> 200 Eastdale Ave., Springfield • (217) 753-6211 http://springfieldparkdistrictgolf.org/bergen.html	<b>18: 35 / 2,657 / 32.4 / 97</b>	<b>Sangamon</b>
<b>Brookhill</b> 3150 County Rd 1700 E, Rantoul • (217) 893-1200 • www.gplfbrookhillgc.com	<b>18: 72 / 6,597 / 71.3 / 125</b>	<b>Champaign</b>
<b>Brookhills</b> 5350 Old Jacksonville Rd., Springfield • (217) 787-8576 • no website	<b>18: 31 / 1,918 / 29.8 / 90</b>	<b>Sangamon</b>
<b>Bunn</b> 2500 S. 11th St., Springfield • (217) 522-2633 • http://springfieldparkdistrictgolf.org/bunn.html	<b>18: 72 / 6,297 / 70.2 / 122</b>	<b>Sangamon</b>
<b>Country Hills</b> 21723 Smoot St., Greenview • (217) 632-7242 • www.countryhillsgc.com	<b>18: 72 / 6,414 / 70.0 / 119</b>	<b>Menard</b>
<b>Eagle Ridge (Sycamore Hills)</b> 928 Clinton Rd., Paris • (217) 463-3434 • www.eagleridgeparis.com	<b>18: 6,589 / 72.2 / 124</b>	<b>Edgar</b>
<b>Edgewood</b> 16497 Kennedy Rd., Auburn • (217) 438-3221 • www.golfedgewood.com	<b>18: 71 / 6,667 / 71.9 / 128</b>	<b>Sangamon</b>
<b>Fox Prairie</b> 3035 Co. Hwy. 38, Windsor • (217) 459-2805 • www.foxprairiegolf.com	<b>18: 71 / 6,712 / 71.8 / 128</b>	<b>Shelby</b>
<b>Harrison Park</b> 1300 W. Voorhees St., Danville • (217) 431-2266 • www.harrisonparkgolfcourse.com	<b>18: 71 / 6,111 / 70.3 / 119</b>	<b>Vermilion</b>
<b>Hickory Point</b> 727 W. Weaver Rd., Forsyth • (217) 421-7444 www.decatu-parks.org/golf/hickory-point-golf-club/	<b>18: 72 / 6,848 / 72.3 / 127</b>	<b>Macon</b>
<b>Hubbard Trail</b> 13937 E. 3680 North Rd., Hoopston • (217) 748-6521 • www.hubbardtrail.com	<b>9: 36 / 3,042 / unrated</b>	<b>Vermilion</b>
<b>Ironhorse</b> 2000 Ironhorse Dr., Tuscola • (217) 253-6644 • www.ironhorsegc.com	<b>18: 72 / 7,131 / 73.0 / 125</b>	<b>Douglas</b>

<b>Lake of the Woods</b> Hartwell C. Howard Par 3 405 N. Lake Of The Woods Rd., Mahomet • (217) 586-2183 • www.golflakelake.com	<b>18: 72 / 6,578 / 71.2 / 125</b> <b>9: 27 / 865 / unrated</b>	<b>Champaign</b>
<b>Lake Shore</b> 1460 E. 1000 North Rd., Taylorville • (217) 824-5521 • https://golflakeshore.com	<b>18: 72 / 6,778 / 72.0 / 117</b>	<b>Christian</b>
<b>Legends of Champaign</b> 4551 Nicklaus Dr., Champaign • (217) 863-2145 • www.legendsofchampaign.com	<b>18: 29 / 1,479 / unrated</b>	<b>Champaign</b>
<b>Lincoln Elks</b> RR 4, Box 25, Lincoln • (217) 732-4010 • www.elks914.org/Golf.aspx	<b>18: 71 / 6,200 / 68.6 / 120</b>	<b>Logan</b>
<b>Lincoln Greens</b> 700 E. Lake Dr., Springfield • (217) 786-4111 http://springfieldparkdistrictgolf.org/lincoln-greens.html	<b>18: 72 / 6,869 / 72.7 / 127</b>	<b>Sangamon</b>
<b>Long Bridge</b> 1055 W. Camp Sangamo Rd., Springfield • (217) 744-8311 • www.longbridgegc.com	<b>18: 36 / 2,834 / 33.4 / 107</b>	<b>Sangamon</b>
<b>Marshall</b> 110 Golf Course Rd., Marshall • (217) 826-2404 • no website	<b>9: 35 / 2,747 / 32.7 / 110</b>	<b>Clark</b>
<b>Meadowview</b> 6489 Meadowview Ln., Mattoon • (217) 258-7888 • https://meadowviewgolf.com	<b>18: 72 / 6,745 / 72.6 / 121</b>	<b>Coles</b>
<b>Moweaqua</b> 2598 E. 1900 North Rd., Moweaqua • (217) 768-3411 • http://moweaquagolfcourse.com	<b>18: 72 / 6,307 / 69.3 / 112</b>	<b>Christian</b>
<b>National at Eagle Creek</b> Eagle Creek State Park, Findlay • (217) 756-5550 • www.golfateaglecreek.com	<b>18: 72 / 6,924 / 73.5 / 134</b>	<b>Shelby</b>
<b>North Greens</b> 901 NE 1st St., Atlanta • (217) 648-5500 • https://m.facebook.com/northgreens/	<b>9: 36 / 3,390 / 72.0 / 125</b>	<b>Logan</b>
<b>Oak Terrace Resort</b> 100 Bayers Lake, Pana • (217) 651-4250 • https://oakterraceresort.com/golf	<b>18: 72 / 6,375 / 70.5 / 123</b>	<b>Christian</b>
<b>The Oaks</b> 851 Dave Stockton Dr., Springfield • (217) 528-6600 • www.theoaksgolfcourse.com	<b>18: 70 / 6,130 / 68.8 / 117</b>	<b>Sangamon</b>
<b>Pasfield</b> 1700 W. Lawrence Ave., Springfield • (217) 698-6049 http://springfieldparkdistrictgolf.org/pasfield.html	<b>9: 34 / 2,299 / 30.8 / 89</b>	<b>Sangamon</b>
<b>Piper Glen</b> 7112 Piper Glen Dr., Springfield • (217) 483-6537 • www.piperglen.com	<b>18: 72 / 7,005 / 73.5 / 132</b>	<b>Sangamon</b> Audra Burks
<b>The Rail</b> 1400 S. Club House Dr., Springfield • (217) 525-0365 • www.railgolf.com	<b>18: 72 / 6,583 / 71.7 / 127</b>	<b>Sangamon</b> Ryan Matrisch
<b>Red Tail Run</b> 520 W. Grove Rd., Decatur • (217) 422-2211 • www.redtailrun.org	<b>18: 72 / 7,351 / 74.4 / 132</b>	<b>Macon</b>
<b>Rogala Public Links</b> 1322 State Hwy. 16, Mattoon • (217) 235-5518 • http://rogalagolf.com/Home_Page_S165.html	<b>18: 35 / 3,069 / 37.3 / unsloped</b>	<b>Coles</b>
<b>Scovill</b> 3909 W. Main St., Decatur • (217) 429-6243 • http://www.decatu-parks.org/golf/scovill-golf-club	<b>18: 71 / 5,925 / 68.4 / 119</b>	<b>Macon</b>
<b>Shambolee</b> 442 S Shore Dr., Petersburg • (217) 632-2140 • http://www.golfshambolee.com	<b>18: 72 / 6,748 / 72.1 / 119</b>	<b>Menard</b>
<b>Timberlake</b> 957 CR 700E, Sullivan • (217) 797-6496 • http://timberlakegolfcourse.com	<b>9: 35 / 3,045 / 34.7 / 112</b>	<b>Moultrie</b>
<b>Turtle Run</b> 332 E. Liberty Ln., Danville • (217) 422-8876 • www.turtleungolfclub.com	<b>18: 72 / 6,771 / 72.1 / 127</b>	<b>Vermilion</b>

<b>Univ. of Illinois</b> 800 Hartwell Dr., Savoy • (217) 359-5613 • www.uofigolf.com	<b>Orange 18: 72 / 6,896 / 72.9 / 130</b> <b>Blue 18: 72 / 6,479 / 70.2 / 119</b>	<b>Champaign</b> Michael Wallner
<b>Willow Pond</b> 808 Golf Course Rd., Rantoul • (217) 893-9000 • http://www.willowpondgolf.com	<b>18: 72 / 6,799 / 71.8 / 115</b>	<b>Champaign</b>
<b>Wolf Creek</b> 2521 Perrysville Rd., Danville • (217) 446-1025 • www.wolfcreeknine.com	<b>9: 35 / 3,120 / unrated</b>	<b>Vermilion</b>
<b>Woodlawn</b> 905 E. Richardson St., Farmer City • (309) 928-3215 • www.woodlawncountryclubfc.com	<b>9: 36 / 3,117 / 69.0 / 117</b>	<b>DeWitt</b>

## GREATER METRO EAST GRANITE CITY TO CARLYLE

<b>Acorns</b> 3933 Ahne Rd., Waterloo • (618) 939-7800 • www.acornsgolfinks.com	<b>18: 72 / 6,701 / 72.7 / 135</b>	<b>Monroe</b>
<b>American Legion Post</b> Ill. Rt. 157, Edwardsville • (618) 656-9774 • www.edwardsvillelegion.com/golf-course.html	<b>9: 35 / 2,652 / unrated</b>	<b>Madison</b>
<b>Annbriar</b> 1524 Birdie Ln., Waterloo • (888) 939-5191 • www.annbriar.com	<b>18: 72 / 6,863 / 72.8 / 136</b>	<b>Monroe</b>
<b>Arlington Greens</b> 200 Arlington Dr., Granite City • (618) 931-5232 • www.arlingtongreens.com	<b>18: 72 / 6,907 / 72.4 / 125</b>	<b>Madison</b>
<b>Barkau Memorial</b> 1501 N Waterworks Rd., Okawville • (618) 243-6610 • www.rbmgolf.com	<b>18: 71 / 6,513 / 70.9 / 128</b>	<b>Washington</b>
<b>Belk Park</b> 880 Belk Park Rd., Wood River • (618) 251-3115 • http://belkpark.com	<b>18: 72 / 6,812 / 71.5 / 121</b>	<b>Madison</b>
<b>Bent Oak</b> 1725 S. Broadway, Breese • (618) 526-8181 • http://breese.org/golf-course/	<b>18: 36 / 3,290 / unrated</b>	<b>Clinton</b>
<b>The Bridges</b> 1655 Columbia Bridges Rd., Columbia • (618) 281-3900 • http://columbiagolfclub.net	<b>18: 72 / 6,998 / 73.0 / 125</b>	<b>Monroe</b>
<b>Carlyle Lake</b> 11777 Ill. Rt. 127, Carlyle • (618) 594-2758 • http://carlylelake.com/golf	<b>18: 36 / 3,309 / 35.4 / 124</b>	<b>Clinton</b>
<b>Cloverleaf</b> 3555 Fosterburg Rd., Alton • (618) 462-3022 • www.cloverleafgolfcourse.com	<b>18: 70 / 5,514 / 64.2 / 108</b>	<b>Madison</b>
<b>Columbia</b> 125 Aa Rd., Columbia • (618) 286-4455 • http://columbiagolfclub.net	<b>18: 71 / 5,970 / 67.6 / 113</b>	<b>Monroe</b>
<b>Elmwood</b> 1400 Eiler Rd., Belleville • (618) 538-5826 • www.golfatelmwood.com	<b>18: 36 / 2,931 / unrated</b>	<b>St. Clair</b>
<b>Fox Creek</b> 6555 Fox Creek Dr., Edwardsville • (618) 692-9400 • www.golffoxcreek.com	<b>18: 72 / 7,027 / 74.9 / 144</b>	<b>Madison</b>
<b>Fairfield</b> 1900 Columbia Quarry Rd., Columbia • (618) 847-7222 • www.fairfieldgolfclub.com	<b>18: 71 / 5,864 / 66.2 / 110</b>	<b>Monroe</b>
<b>Gateway National</b> 18 Golf Dr., Madison • (618) 482-4653 • www.gatewaynational.com	<b>18: 71 / 7,178 / 75.0 / 138</b>	<b>St. Clair</b>
<b>Governor's Run</b> 3300 Governors Dr., Carlyle • (618) 594-4585 • www.governorsrun.com	<b>18: 72 / 7,013 / 73.9 / 131</b>	<b>Clinton</b>
<b>Grand Marais</b> 5802 Lake Dr., East Saint Louis • (618) 398-9999 • www.grandmaraisgolf.com	<b>18: 72 / 6,998 / 71.9 / 129</b>	<b>St. Clair</b>

<b>Granite City Legacy</b> 3500 Cargill Rd., Granite City • (618) 931-4653 • www.thelegacygolfcourse.com	<b>18: 71 / 6,327 / 70.4 / 114</b>	<b>Madison</b>
<b>Indian Mounds</b> 3500 Kingshighway, Fairmont City • (618) 271-4000 • www.indianmoundsgolfcourse.com	<b>18: 59 / 3,381 / unrated</b>	<b>St. Clair</b>
<b>Indian Springs</b> 21347 Ill. Rt. 185, Fillmore • (217) 538-2392 • www.indianspringsgolf.net	<b>18: 70 / 6,148 / 68.9 / 122</b>	<b>Montgomery</b>
<b>Lone Oak</b> Off Hwy. 108, Carrollton • (217) 942-6166 • <i>no website</i>	<b>9: 32 / 2,150 / unrated</b>	<b>Greene</b>
<b>Nashville</b> 660 E Memorial Dr., Nashville • (618) 327-3821 • https://m.facebook.com/NashMGC/	<b>18: 36 / 6,214 / 70.0 / 124</b>	<b>Washington</b>
<b>Oak Brook</b> 9157 Fruit Rd., Edwardsville • (618) 656-5600 • http://oakbrookgc.com	<b>East 9: 36 / 3,195 (71 / 6,231 with West) North 9: 36 / 3,605 (71 / 6,641 with West) West 9: 35 / 3,036 / 71.5 / 118</b>	<b>Madison</b>
<b>Oak Leaf</b> 186898 Oak Leaf Country Club Rd., Girard • (618) 627-3015 • www.oakleafcc.com	<b>9: 32 / 2,236 / 60.6 / 98</b>	<b>Macoupin</b>
<b>The Orchards</b> 1499 Golf Course Dr., Belleville • (618) 233-8921 • www.orchardsgolfclub.com	<b>18: 71 / 6,787 / 72.2 / 126</b>	<b>St. Clair</b>
<b>The Prairies</b> 300 Tricentennial Ct., Cahokia • (618) 332-6944 • www.prairiesgc.com	<b>18: 71 / 6,490 / 72.0 / 127</b>	<b>St. Clair</b>
<b>Mystic Oak (Ridge)</b> 643 Ridge Rd., Waterloo • (618) 939-4646 • www.mysticoakgolf.com	<b>18: 72 / 6,358 / 70.6 / 125</b>	<b>Monroe</b>
<b>River Lakes</b> 2218 Ramsey Rd., Columbia • (618) 281-6665 • www.riverlakesgolfcourse.com	<b>18: 71 / 5,478 / 65.7 / 100</b>	<b>Monroe</b>
<b>Rock Spring</b> 2116 College Ave., Alton • (618) 465-9898 • www.rockspringgolfcourse.com	<b>9: 35 / 3,015 / unrated</b>	<b>Madison</b>
<b>Rolling Hills</b> 5801 Pierce Ln., Godfrey • (877) 610-1416 • www.rollinghillsgc.com	<b>18: 71 / 5,687 / 66.1 / 100 Executive 9: 29 / 1,927 / unrated</b>	<b>Madison</b>
<b>Spencer T. Olin</b> 4701 College Ave., Alton • (618) 465-3111 • http://spencerolinf.com	<b>18: 72 / 6,941 / 73.5 / 135</b>	<b>Madison</b>
<b>Shoal Creek</b> 505 Northwest St., Raymond • (217) 229-4545 • https://m.facebook.com/ShoalCreekGolfCourse	<b>9: 35 / 3,172 / 35.0 / 115</b>	<b>Montgomery</b>
<b>Stonewolf</b> 1195 Stonewolf Trl., Fairview Heights • (618) 624-4653 • http://stonewolfgolf.com	<b>18: 72 / 6,943 / 73.5 / 137</b>	<b>St. Clair</b>
<b>Tamarack</b> 800 Tamarack Ln., Shiloh • (618) 623-6666 • www.golfattamarack.com	<b>18: 71 / 6,282 / 69.8 / 120</b>	<b>St. Clair</b>
<b>Terry Park</b> 30565 Terry Park Rd., Palmyra • (217) 436-2531 • www.terryparkgc.com	<b>18: 35 / 2,814 / 66.4 / 100</b>	<b>Macoupin</b>
<b>Timber Lakes</b> 3120 Forest Lake Ln., Staunton • (618) 635-4653 • http://timberlakesgolfcourse.com	<b>18: 72 / 6,960 / 72.5 / 128</b>	<b>Macoupin</b>
<b>Triple Lakes</b> 6942 Triple Lakes Rd., Millstadt • (618) 476-9985 • http://triplelakesgolfcourse.com	<b>18: 72 / 6,227 / 69.1 / 112</b>	<b>St. Clair</b>
<b>Twin Oaks</b> 21900 Ill. Rt. 127, Greenville • (618) 749-5611 • www.twinoaksgolf.net	<b>18: 36 / 3,190 / unrated</b>	<b>Bond</b>
<b>White Oak</b> 545 Rec Area Rd., Marissa • (618) 295-2889 https://m.facebook.com/White-Oak-Golf-Course-319603801501647/	<b>18: 36 / 3,067 / 67.1 / 109</b>	<b>St. Clair</b>

<b>Wolves Crossing</b> 23745 N. Centennial Rd., Jerseyville • (618) 498-3178 • http://golfhgm.com/wolves-crossing	<b>18: 71 / 6,028 / 67.3 / 107</b>	<b>Jersey</b>
<b>The Woodlands</b> 2839 Harris Ln., Alton • (618) 462-1456 • http://golfhgm.com/the-woodlands/	<b>18: 72 / 6,418 / 70.6 / 123</b>	<b>Madison</b>
<b>Yorktown</b> 300 Goalby Dr., Belleville • (618) 233-2000 http://shilohil.org/parks-recreation/yorktown-golf-course	<b>18: 54 / 2,146 / unrated</b>	<b>St. Clair</b>

## SOUTH EFFINGHAM TO CAIRO

<b>Cardinal</b> 15737 N. Beach Rd., Effingham • (217) 868-2860 www.sites.google.com/site/cardinalgolfcourse	<b>18: 72 / 6,025 / 67.4 / 108</b>	<b>Effingham</b>
<b>Carmi</b> 883 Country Club Rd. N. 1350, Carmi • (618) 384-5011 • www.carmacountryclub.com	<b>9: 36 / 2,978 / 65.1 / 99</b>	<b>White</b>
<b>Chester</b> 1310 Lehmen Dr., Chester • (618) 826-3168 • www.chestercountryclub.com	<b>18: 36 / 3,598 / 36.0 / 120</b>	<b>Randolph</b>
<b>Colonial</b> 3449 Old Rt. 51 S., Sandoval • (618) 247-3307 • www.sandovalcolonialgolf.com	<b>18: 70 / 5,667 / 65.1 / 102</b>	<b>Marion</b>
<b>Crab Orchard</b> 901 W. Grand Ave., Cartersville • (618) 985-2321 • www.craborchardgolfclub.com	<b>18: 70 / 6,420 / 71.0 / 129</b>	<b>Williamson</b>
<b>Crooked Creek</b> 8250 E. Seven Oaks Rd., Mount Vernon • (618) 735-2445 Opened 1994 Closed aft 2011	<b>18: 70 / 5,454 / 64.6 / 111</b>	<b>Jefferson</b>
<b>Deer Run / Heath Mem.</b> Washington Park, Robinson • (618) 544-2350 • http://cityofrobinson.com/parks-recreation/	<b>9: 27 / 1,071 / 33.0 / 113</b>	<b>Crawford</b>
<b>East Fork Par 3</b> 5636 E. Branchwood Ln., Olney • (618) 395-3505 • http://eastforkgolf.com	<b>9: 27 / 858 / unrated</b>	<b>Richland</b>
<b>Egyptian</b> 4880 US Hwy. 51, Mounds • (618) 745-6412 • www.egyptiancountryclub.com	<b>9: 36 / 3,042 / unrated</b>	<b>Pulaski</b>
<b>Fairfield</b> 701 NW 9th St., Fairfield • (618) 847-7222 • www.waynecountygolf.com	<b>18: 70 / 5,906 / unrated</b>	<b>Wayne</b>
<b>Flying M Ranch</b> 6003 Mathis Rd., Centralia • (618) 532-8602 • <i>no website</i>	<b>9: 32 / 2,040 / 32.0 / 113</b>	<b>Marion</b>
<b>Flora</b> Old Highway 50, Flora • (618) 662-2500 https://m.facebook.com/Flora-Golf-and-Country-Club-165520246866770/	<b>9: 35 / 3,054 / 36.0 / 113</b>	<b>Clay</b>
<b>Fore-Way</b> 16041 N. 1000th St., Effingham • (217) 868-5418 • www.forewaygolfcourse.com	<b>9: 36 / 2,910 / unrated</b>	<b>Effingham</b>
<b>The Gambit</b> 1550 Ill. Rt. 146 E., Vienna • (618) 658-6022 • www.gambitgolf.com Closed 2015, status in limbo	<b>18: 71 / 6,546 / 72.4 / 137</b>	<b>Johnson</b>
<b>Green Hills</b> 3800 E. Fairfield Rd., Mount Vernon • (618) 244-3961 • www.greenhillsgolfclub.net	<b>18: 71 / 6,490 / 72.2 / 127</b>	<b>Jefferson</b>
<b>Greenview</b> 2801 Putter Dr., Centralia • (618) 532-7395 • www.greenviewgolfclub.com	<b>18: 70 / 6,150 / 68.5 / 107</b>	<b>Marion</b>
<b>Hardin County (TTI)</b> RR 1, Cave In Rock • (618) 289-4587 • www.hardincountygolfcourse.com	<b>9: 36 / 2,657 / unrated</b>	<b>Hardin</b>

<b>Hickory Ridge</b> 2727 W. Glenn Rd., Carbondale • (618) 529-4386 • www.cpkd.org	<b>18: 72 / 6,863 / 73.3 / 137</b>	<b>Jackson</b> Michael Day
<b>Indian Hills</b> 20 Indian Trail Dr., Mount Vernon • (618) 244-9697 www.facebook.com/Indian-Hills-Golf-Course-Mt-Vernon-IL-175249045826863/	<b>18: 72 / 6,022 / 66.0 / 99</b>	<b>Jefferson</b>
<b>Jackson</b> 5776 Country Club Rd., Murphysboro • (618) 684-2387 • www.jacksoncc.com	<b>18: 71 / 6,034 / 69.0 / 124</b>	<b>Jackson</b>
<b>Links at Kokopelli</b> 1527 Champions Dr., Marion • (618) 997-5656 • www.kokopelligolf.com	<b>18: 71 / 7,039 / 74.7 / 139</b>	<b>Williamson</b>
<b>McLeansboro</b> Golf Course Rd., McLeansboro • (618) 643-2400 • www.mclgolf.org	<b>9: 36 / 3,228 / 70.0 / 112</b>	<b>Hamilton</b>
<b>Mount Carmel Municipal</b> 700 Park Rd., Mount Carmel • (618) 262-5771 • www.mtcarmelgolfcourse.com	<b>18: 71 / 6,121 / 69.2 / 123</b>	<b>Wabash</b>
<b>North County</b> 703 W. Market St., Red Bud • (618) 282-6590 • http://nccclub.weebly.com	<b>9: 35 / 2,842 / unrated</b>	<b>Randolph</b>
<b>Oak Glen</b> 11234 N. 600th St., Robinson • (618) 592-3030 • www.golfoakglen.com	<b>18: 71 / 6,086 / 67.7 / 112</b>	<b>Crawford</b>
<b>Pine Lakes</b> 2705 S. Park Ave., Herrin • (618) 942-6816 • www.pinelakes18.com	<b>18: 71 / 6,003 / 68.9 / 123</b>	<b>Williamson</b>
<b>Pyramid Oaks</b> 5500 Ill. Rt. 4 S., Percy • (618) 497-8484 • www.pyramidoaks.com (website inactive)	<b>9: 36 / 3,100 / 69.9 / 126</b>	<b>Randolph</b>
<b>Ramsey Lake</b> RR 1 Box 221, Ramsey • (618) 423-2261 • <i>no website</i>	<b>9: 35 / 2,750 / 62.0 / 103</b>	<b>Fayette</b>
<b>Red Hawk</b> 6204 Ill. Rt. 154, Tamaroa • (618) 357-8712 • http://redhawkgc.net	<b>18: 70 / 6,273 / 70.5 / 133</b>	<b>Perry</b>
<b>Rend Lake</b> 12575 Golf Course Dr., Whittington • (618) 629-2353 • www.rendlakegolfresort.com	<b>East-West 18: 36 / 6,812 / 71.8 / 131 South 9: 36 / 3,442 /</b>	<b>Franklin</b>
<b>Saint Elmo</b> 1 mi. NW of Saint Elmo, Saint Elmo • (618) 829-3390 • www.stelmogolfclub.com	<b>9: 36 / 3,220 / 35.3 / 126</b>	<b>Fayette</b>
<b>Saline County</b> 355 Golf Course Rd., Eldorado • (618) 273-9002 • <i>no website</i>	<b>18: 70 / 5,975 / 66.9 / 108</b>	<b>Saline</b>
<b>Shawnee Hills</b> 1110 Shawnee Hills Rd., Harrisburg • (618) 253-7294 • https://www.facebook.com/playgolflhere/	<b>9: 36 / 2,948 / 35.1 / 128</b>	<b>Saline</b>
<b>Sparta</b> 19 Fairway Dr., Sparta • (618) 443-4911 • <i>no website</i>	<b>18: 35 / 2,981 / 32.7 / 101</b>	<b>Randolph</b>
<b>Stardust</b> 14756 Stardust Rd., Johnston City • (618) 983-8822 https://m.facebook.com/StardustGolfCourse/	<b>9: 36 / 2,972 / 35.0 / 129</b>	<b>Williamson</b>
<b>Stone Creek</b> 503 Stone Creek Dr., Makanda • (618) 457-5455 • www.stonecreekgolf.com	<b>18: 72 / 6,875 / 74.0 / 140</b>	<b>Jackson</b>
<b>Union County</b> 430 E. Jefferson St., Anna • (618) 833-7912 • www.uccgolf.com	<b>18: 71 / 6,613 / 71.4 / 132</b>	<b>Saline</b>
<b>Vandalia</b> 1110 S. 8th St., Vandalia • (618) 283-1365 • <i>no website</i>	<b>9: 35 / 2,782 / 34.6 / 113</b>	<b>Fayette</b>

Tell them you saw the course listing in Illinois Golfer

## INDIANA OUTLYING

**Aberdeen** 18: 72 / 6,917 / 73.0 / 134  
245 Tower Rd., Valparaiso • (219) 462-5050 • www.golftaberdeen.com Mike Higdon

**Beechwood** 18: 72 / 6,657 / 72.8 / 129  
2222 Woodlawn Dr., LaPorte • (219) 362-2651 • www.thebeachwoodgolfcourse.com

**Birch Boilemaker Kampen** 18: 72 / 7,253 / 76.5 / 145  
**Ackerman** 18: 71 / 6,436 / 70.3 / 124  
1300 Cherry Ln., West Lafayette • (765) 494-3139 • www.purduegolf.com

**Blackthorn** 18: 72 / 7,105 / 75.2 / 135  
6100 Nimitz Pkwy., South Bend • (574) 232-4653 • www.blackthorn.com Rich Love

**The Brassie** 18: 72 / 7,008 / 74.3 / 137  
1110 Pearson Rd., Chesterton • (219) 921-1192 • www.thebrassie.com Deane Borcherding

**Briar Leaf** 18: 72 / 6,850 / 73.2 / 132  
3233 N. State Rd., LaPorte • (219) 326-1992 • www.briarleaf.com Jay Williams

**Brickyard Crossing** 18: 72 / 6,994 / 74.5 / 137  
4400 W. 16th St., Speedway • (317) 484-6572 • www.brickyardcrossing.com Jeff Schroeder

**Creekside** Glen 9: 36 / 3,270 / 36.0 / 125  
Meadows 3:  
2335 Clifford Rd., Valparaiso • (219) 531-7888 • www.creeksidegolfcourse.com

**Curtis Creek** 18: 72 / 6,284 / 70.6 / 117  
5385 S. 1080 W., Rensselaer (east of) • (219) 866-7729 • www.curtiscreekcountryclub.com

**Duck Creek** 18: 70 / 5,338 / 70.0 / 113  
636 N. 700 W., Hobart • (219) 759-5870 • www.duckcreekgolfcourse.com Ken Habhan (GM)

**Elbel Park** 18: 70 / 6,885 / 70.7 / 113  
26595 Auten Rd., South Bend • (574) 271-9180 • www.sbparkgolf.org/elbel/

**Erskine Park** 18: 70 / 6,098 / 68.5 / 120  
4200 Miami Rd., South Bend • (574) 291-3216 • www.sbparkgolf.org/erskine/

**Forest Park** 18: 70 / 5,642 / 67.2 / 114  
1155 Sheffield Dr., Valparaiso • (219) 531-7888 • www.forestparkgolfcourse.com

**The Fort** 18: 72 / 7,148 / 74.4 / 139  
5200 N. Post Rd., Indianapolis • (317) 543-9597 • www.thefortgolfcourse.com

**French Lick Resort** Ross 18: 70 / 7,030 / 72.3 / 135  
Dye 18: 72 / 8,102 / 80.0 / 148  
Valley Links Bendelow 9: 36 / 3,478 /  
8670 W. State Rd. 56, French Lick • (888) 936-9360 • www.frenchlick.com

**Harrison Hills** 18: 72 / 6,820 / 72.6 / 131  
413 E. New St., Attica • (765) 762-1135 • www.harrisonhills.com Geoff Curtis (GM)

**Hazelden** 18: 70 / 5,137 / 68.4 / 111  
3705 E. Ind. 16 • (219) 275-7771 • www.hazeldencountryclub.com

**Hulman Links** 18: 72 / 7,225 / 74.9 / 144  
990 N. Chamberlain St., Terre Haute • (812) 877-2096 • www.hulmanlinks.com David Kennedy

**Legacy Hills** 18: 72 / 6,600 / unrated  
299 W. Johnson Rd., LaPorte • (219) 324-4777  
https://m.facebook.com/Legacy-Hills-Golf-Club-Inc-113554758679199/

**LuGene Links** 9: 36 / 3,200 / 34.9 / 112  
8687 N 300 W, Lake Village • (219) 992-3337 • no website Gene Berry

**Michigan City** South 18: 72 / 6,169 / 68.7 / 113  
North 18: 60 / 3,531 / 58.2 / 90  
4000 E. Michigan Blvd., Michigan City • (219) 873-1516 • www.michigancitygolfcourse.com

**Mink Lake** 9: 35 / 3,000 / 33.5 / 102  
636 N. Calumet Ave., Valparaiso • (219) 462-2585 • no website

**Notre Dame Burke** 9: 35 / 3,211 / 35.5 / 116  
US 933 at Dorr Rd. (east) • (574) 631-6425 • http://burkegolfcourse.nd.edu/ John Foster

**Notre Dame Warren** 18: 71 / 7,020 / 74.6 / 135  
110 Warren Golf Course, Notre Dame • (574) 631-4653 • www.warrenngolfcourse.com John Foster

**Robbinhurst** 18: 68 / 5,629 / 66.5 / 111  
383 W. County Rd. 875 N., Portage • (219) 762-9711 • www.robbinhurst.com Andrew Elderkin

**Sandy Pines** 18: 72 / 6,801 / 72.2 / 135  
10527 Bunker Dr., DeMotte • (877) 987-3611 • www.sandypinesgc.com Brad Burvan

**Studebaker** 9: 29 / 1,898 / unrated  
718 E. Calvert St., South Bend • (574) 287-6634 • www.sbparkgolf.org/studebaker/

**Swan Lake** Black 18: 72 / 7,112 / 74.2 / 129  
Silver 18: 72 / 6,825 / 72.0 / 126  
5203 Plymouth Tr., Plymouth • (800) 935-5545 • http://swanlakeresort.com

**Trophy Club** 18: 72 / 7,317 / 75.3 / 138  
3875 N. State Rd. 52, Lebanon • (765) 482-7272 • www.thetrophyclubgolf.com B.G. Winings

## WISCONSIN

**Abbey Springs** 18: 72 / 6,466 / 71.4 / 133  
1 Country Club Dr., Fontana • (262) 275-6113 • www.abbeysprings.com Jerry Mortier (GM)

**Big Oaks** 18: 72 / 5,848 / unrated  
9: 36 / 2,962 / unrated  
6117 123rd Pl., Pleasant Prairie • (262) 694-4200 • www.bigoaksgolf.com Jose Reyes

**Blackwolf Run** River 18: 72 / 7,404 / 76.2 / 151  
Meadow Valleys 18: 72 / 7,250 / 75.1 / 145  
1111 W. Riverside Dr., Kohler • (866) 847-4856 • www.destinationkohler.com

**The Bog** 18: 72 / 7,110 / 74.9 / 142  
3121 County Hwy. 1, Saukville • (800) 484-3264 • www.golfthebog.com

**Brighton Dale Links**  
Blue Spruce 18: 72 / 6,687 / 72.0 / 129  
Red Pine 18: 72 / 7,024 / 72.9 / 132  
White Birch 18: 72 / 6,977 / 73.3 / 130  
830 248th Ave., Kansasville • (262) 878-1440 • www.co.kenosha.wi.us/publicworks/golf

**Bristol Oaks** 18: 72 / 6,319 / 70.1 / 120  
16801 75th St., Bristol • (262) 857-2302 • www.bristollocks.com Frank Blum (GM)

**Brown Deer Park** 18: 71 / 6,716 / 72.6 / 132  
7625 N. Range Line Rd., Milwaukee • (414) 352-8080 • http://milwaukeecountygolfcourses.com

**Country Club Estates** 9: 35 / 3,011 / 32.3 / 121  
365 Pottawatomi Dr., Fontana • (262) 275-3705 • www.countryclubbestatesgolf.com

**Delbrook** North 9: 35 / 3,183 / ratings  
Middle 9: 36 / 3,326 / combine  
South 9: 36 / 3,266 / on 9s  
700 S. 2nd St., Delavan • (262) 728-3966 • www.delbrookgc.com Dan Piecha

**Erin Hills** 18: 72 / 7,820 / 77.9 / 145  
7169 County Rd. O, Erin • (866) 772-4769, (262) 670-8600 • www.erinhills.com Rich Tock

**Geneva National** Palmer 18: 72 / 7,171 / 74.8 / 140  
Trevino 18: 72 / 7,120 / 74.5 / 137  
Player 18: 72 / 7,039 / 74.4 / 138  
1221 Geneva National Ave. South, Lake Geneva • (262) 245-7000  
www.genevanationalresort.com David Winget

**Grand Geneva** Brute 18: 72 / 6,997 / 73.8 / 136  
Highlands 18: 71 / 6,167 / 71.9 / 131  
7036 Grand Geneva Way, Lake Geneva • (262) 248-8811 • www.grandgeneva.com

**Hawk's View**  
Como Crossing 18: 72 / 7,032 / 73.1 / 133  
Barn's Hollow 18: 54 / 2,708 / unrated  
7377 Krueger Rd., Lake Geneva • (262) 348-9900 • www.hawksviewgolfclub.com

**Johnson Park** 18: 72 / 6,703 / 71.5 / 124  
6200 Northwestern Ave., Racine • (262) 637-5068 • www.racinegolfonline.com

**Lake Lawn Resort** 18: 70 / 6,418 / 69.2 / 120  
2400 E. Geneva St., Delavan • (262) 728-2347 • www.lakelawnresort.com Jeff Selgren

**Lawsonia** Links 18: 72 / 6,853 / 72.8 / 130  
Woodlands 18: 72 / 6,618 / 72.7 / 132  
W2615 S. Valley View Dr., Green Lake • (920) 294-3320 • www.lawsonia.com Jeff Kleinke

**Nippersink Resort** 18: 71 / 6,652 / 69.9 / 119  
N1055 Tombeau Rd., Genoa City • (262) 279-6311 • www.nippersinkresort.com Tracy Heim

**Petrifying Springs** 18: 70 / 5,979 / 67.8 / 119  
4909 7th St., Kenosha • (262) 552-9052 • www.co.kenosha.wi.us/publicworks.golf Chris Adams

**Sand Valley** SV 18: 72 / 6,909 / 72.6 / 128  
Mammoth Dunes 18: 72 / 6,935 / 72.4 / 132  
The Sandbox 17: 51 / 1,652 / no rating  
1697 Leopold Way, Nekoosa • (888) 651-5539 • www.sandvalleygolfresort.com

**Shoop Park** 9: 34 / 2,631 / 35.5 / 113  
4510 Lighthouse Dr., Racine • (262) 681-9714 • www.racinegolfonline.com

**Spring Valley** 18: 70 / 6,354 / 70.1 / 119  
23913 Wilmot Rd., Salem • (262) 862-2626 • www.springvalleyccsalem.com John Wagner

**Twin Lakes** 18: 70 / 5,930 / 67.5 / 116  
1230 Legion Dr., Twin Lakes • (262) 877-2500 • www.tlccgolf.com Chad Cantwell

**University Ridge** 18: 72 / 6,888 / 73.2 / 142  
9002 County Rd. PD, Verona • (800) 897-4343 • www.universityridge.com Mike Gaspard

**Washington Park** 9: 35 / 2,759 / unrated  
2801 12th St., Racine • (262) 635-0118 • www.racinegolfonline.com

**Whistling Straits** Straits 18: 72 / 7,790 / 77.2 / 152  
Irish 18: 72 / 7,201 / 75.6 / 146  
N8501 Hwy. LS, Haven • (800) 618-5535 • www.destinationkohler.com

## MICHIGAN

**Angels Crossing** 18: 72 / 7,169 / 74.3 / 135  
3600 E. West (Schoolcraft) Ave., Vicksburg • (269) 694-2700 • www.golfangelscrossing.com

**Arcadia Bluffs** Bluffs 18: 72 / 7,300 / 75.7 / 146  
South 18: 72 / 7,412 / 75.6 / 132  
14710 Northwood Hwy., Arcadia • (800) 494-8666 • https://arcadiabluffs.com

**Bay Harbor Preserve / Links** 18: 71 / 6,784 / 72.9 / 142  
Quarry 9: 36 / 3,341 / 73.0 / 145 (Links to Quarry)  
5800 Coastal Ridge Dr., Bay Harbor • (231) 439-4085 • www.bayharbortgolf.com

<b>Belvedere</b>	18: 72 / 6,943 / 73.7 / 134
5371 Marion Center Rd., Charlevoix • (866) 547-2611 • www.belvederegolfclub.com	
<b>Black Lake</b>	18: 72 / 7,035 / 74.8 / 143
2800 Maxon Rd., Onaway • (989) 733-4653 • www.blacklakegolf.com	
<b>Eagle Eye</b>	18: 72 / 7,323 / 75.9 / 145
15500 Chandler Rd., Bath • (517) 903-8064 • www.hawkhollow.com/eagle-eye-golf-course/	
<b>Forest Dunes</b>	18: 72 / 7,116 / 75.2 / 146
Loop / Red 18: 70 / 6,786 / to be rated – counterclockwise routing Loop / Black 18: 70 / 6,861 / to be rated – clockwise routing 6376 Forest Dunes Dr., Roscommon • (989) 275-0700 • www.forestdunesgolf.com	
<b>Grand Beach</b>	9: 36 / 2,955 / 68.6 / 122
Grand Beach • (269) 469-4888 • www.grandbeach.org/pro_shop.html	
<b>Grand Traverse</b>	Bear 18: 72 / 7,078 / 76.3 / 148
Wolverine 18: 72 / 7,043 / 71.1 / 138 Spruce Run 18: 70 / 6,304 / 71.1 / 134 100 Grand Traverse Village Blvd., Acme • (231) 534-6000 <a href="https://www.grandtraverseresort.com">https://www.grandtraverseresort.com</a>	
<b>Marquette</b>	Heritage 18: 71 / 6,260 / 70.0 / 124
Greywalls 18: 71 / 6,828 / 73.0 / 144 1075 Grove St., Marquette • (906) 225-0721 • www.marquettgolfclub.com	
<b>Harbor Shores</b>	18: 72 / 6,861 / 71.7 / 143
201 Graham Ave., Benton Harbor • (269) 927-4653 • www.harborshoresgolf.com Ross Smith (GM)	
<b>HawksHead</b>	18: 72 / 7,003 / 72.8 / 129
523 HawksNest Dr., South Haven • (269) 639-2121 • www.hawksheadlinks.com Larry Tebelak	
<b>Lake Michigan Hills</b>	18: 72 / 6,911 / 73.9 / 135
2520 Kerlikowske Rd., Benton Harbor • (269) 849-4653 • www.lakemichiganhills.com	
<b>Lochenheath</b>	18: 72 / 7,280 / 77.2 / 148
7951 Turnberry Cir., Williamsburg • (231) 938-9800 • www.lochenheath.com	
<b>Pilgrim's Run</b>	18: 73 / 7,093 / 74.4 / 143
11401 Newcosta Ave., Pierson • (888) 533-7742 • www.pilgrimsrun.com	
<b>Timberstone</b>	18: 72 / 6,938 / 74.5 / 150
N. 3332 Pine Mountain Rd., Iron Mountain • (906) 776-0111 • www.pinemountainresort.com	
<b>Otsego</b>	Classic 18: 72 / 6,267 / 69.8 / 121
Tribute 18: 72 / 7,155 / 74.1 / 134 696 M-32 East, Gaylord • (800) 752-5510 • www.otsegoclub.com	
<b>St. Ives</b>	18: 72 / 6,702 / 73.1 / 146
9900 St. Ives Dr., Stanwood • (800) 972-4837 • www.tullymoregolf.com	
<b>Signal Point</b>	9: 72 / 6,225 / 70.5 / 123
Open w/Blackthorn Gold Pass 1475 W. River Rd., Niles • (269) 683-7073 • www.signalpointclub.com	
<b>Tullymore</b>	18: 72 / 7,250 / 76.0 / 150
11969 Tullymore Dr., Stanwood • (800) 972-4837 • www.tullymoregolf.com	
<b>Whittaker Woods</b>	18: 72 / 7,071 / 74.3 / 144
12578 Wilson Rd., New Buffalo • (269) 469-3400 • www.golfwhittaker.com Steve Dell	

Illinois Golfer lists more facilities (594) than any other publication in the state!

[www.illinoisgolfer.net](http://www.illinoisgolfer.net)

## CHICAGOLAND RANGES

STAND-ALONE OUTDOOR FACILITIES / INDOOR DOMES

<b>BallyBunion</b>	4200 Rt. 83, Long Grove	(847) 634-3363
<b>Bartlett Golf Center</b>	1301 W. Lake St., Bartlett	(847) 830-9385
<b>Better Shots</b>	825 Tyrell Rd., Gilberts	(847) 697-5000
<b>Birdies &amp; Eagles</b>	800 McDonald Rd., South Elgin	(847) 931-2233
<b>Bobby's Hunt Club</b>	491 S. Hunt Club Rd., Gurnee	(847) 549-6090
<b>Boulder Golf Range</b>	2900 Beverly Rd., Hoffman Estates	(847) 426-1588
<b>Buffalo Grove Sports Center</b>		
	801 McHenry Rd., Buffalo Grove	(847) 353-7575
<b>Bushwood Golf</b>	30 W. Madison St., Maywood	(708) 344-2700
<b>Central Park Range</b>	5799 Central Ave., Portage, Ind.	(219) 762-4653
<b>Crete Family Fun Center</b>	955 Main St., Crete	(708) 672-7991
<b>Deer Run Family Golf</b>	11007 Rt. 120, Woodstock	(815) 338-9701
<b>Diversey Driving Range</b>	141 W. Diversey Pkwy., Chicago	(312) 742-7929
<b>Douglas Park Learning</b>	1401 S. Sacramento Ave., Chicago	(312) 747-7670
<b>Fore Seasons</b>	4418 Buhl Rd., Crystal Lake	(815) 444-8100
<b>Golf Farm</b>	2100 N. Rt. 12, Wauconda	(847) 526-4000
<b>Green Garden Golf Dome</b>	9511 W. Monee-Manhattan Rd., Frankfort	(815) 469-3350
<b>Green Valley Golf</b>	26W101 Lake St., Hanover Park	(630) 289-6600
<b>Golf Learning Center Hamilton Lakes</b>		
	500 Park Blvd., Itasca	(630) 773-7997
<b>Harry Semrow Range</b>	1150 E. Golf Rd., Des Plaines	(847) 296-5764
<b>Highland Park Learning</b>	2205 Skokie Valley Rd., Highland Park	(847) 433-3422
<b>Lippold Park</b>	1 E. Crystal Lake Ave., Crystal Lake	(815) 459-0680
<b>Master Golf</b>	425 S. Rt. 45, Grayslake	(847) 223-6886
<b>Mid Iron (and 3 holes)</b>	12680 S. Bell Rd., Palos Park	(630) 257-3340
<b>Mistwood Golf Dome</b>	730 N. Bolingbrook Dr., Bolingbrook	(630) 739-7600
<b>Oakton Range</b>	2800 W. Oakton Ave., Park Ridge	(847) 692-3580
<b>Paradise Golf Supply</b>	1500 N. Main St., Crown Point, Ind.	(219) 313-6769
<b>Perfection Park</b>	6215 S. Bridge St., Yorkville	(630) 553-6855
<b>Partner Golf Center</b>	6615 W. Irving Park Rd., Chicago	(773) 286-2060
<b>Pro Circle</b>	1810 Rt. 12, Spring Grove	(815) 675-2747
<b>Riedy's Tee Time</b>	1400 Maple Ave., Lisle	(630) 852-5759
<b>Skokie Sports Park</b>	3459 Oakton St., Skokie	(847) 674-1500
<b>Sports Zone Family Fun</b>	100 Business Rt. 30, Aurora	(630) 820-8624
<b>Sugar Grove Family Fun</b>	Rt. 47 & Jericho Rd., Sugar Grove	(630) 466-3866
<b>Sunset Meadows Range</b>	811 S. Dwyer Ave., Arlington Heights	(847) 394-5865
<b>T-Time Golf</b>	13750 W. 159th St., Homer Glen	(708) 301-6500
<b>Top Golf</b>	3211 Odyssey Ct., Naperville	(630) 596-1000
<b>Top Golf</b>	699 W. Thorndale Ave., Wood Dale	(630) 595-4653
<b>Westland Golf</b>	11900 Algonquin Rd., Huntley	(847) 669-0204
<b>Woodland Trails</b>	1500 E. Euclid Ave., Mount Prospect	(847) 296-4563

## IN OUR REGULAR APRIL ISSUE

A season preview  
A look at the local golf tours  
A report on the Masters

and soon ...  
a revamped website!

# TOUR GUIDE



**Kevin Strelman** 60th WGR  
\$1,028,057 in 16 starts 69th FEC  
Best: T3 Safeway Open  
70.525 scoring average



**Luke Donald** 577th WGR  
\$30,710 in 13 starts 216th FEC  
Best: T40 Bermuda  
72.275 scoring average



**Doug Ghim** 243rd WGR  
\$867,328 in 15 starts 75th FEC  
Best: T5 Hope / American Express  
70.169 scoring average



**Nick Hardy** KF Tour  
\$211,616 in 26 starts 19th KFT  
Best: T3 Bahamas  
69.31 scoring average



**Brad Hopfinger** KF Tour  
\$172,858 in 22 starts 30th KFT  
Best: T3 Wichita  
69.75 scoring average



**Vince India** KF Tour  
\$136,252 in 25 starts 55th KFT  
Best: T3 Tour Championship  
70.31 scoring average



**Scott Langley** KF Tour  
\$43,115 in 23 starts 127th KFT  
Best: T15 Panama  
70.96 scoring average

Through Texas Open; WGR: World Golf Ranking; FEC: FedEx Cup